

EWIND Cloud Management APP User Manual

Contents

EWIND Cloud Management APP User Manual	1
1. APP Download	2
2. Login	2
2.1. Log in the EWIND Cloud App	2
2.2. EWIND Cloud App User Interface	3
3. Network	4
3.1. Add My Network	4
4. My Devices	6
4.1. Add a Device	6
4.2. My Devices	7
4.2.1. Overview	8
4.2.2. Topology	9
4.2.3. Device Panel (Switch)	10
4.2.4. VLAN Configuration	11
4.2.5. Port Status	12
5. Messages	13
5.1. Alarm Notifications	13
5.2. Upgrade Notifications	14
6. My	15
6.1. Operation Logs	15
6.2. Alarm Settings	16
6.3. Language	18
6.4. Change The Password	19
6.5. Logout	20
6.6. Cancel / Delete Account	21

1. APP Download

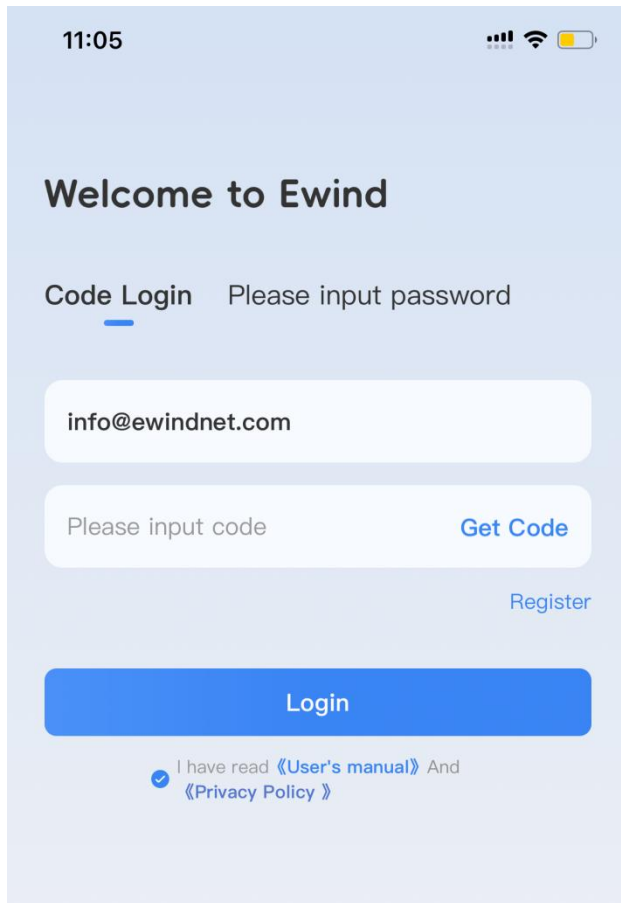
Use an iOS device to scan the QR code below to download the EWIND Cloud App, or Search “**EWIND Cloud**” in the App Store. (Android system is not supported at the moment, will be soon.)



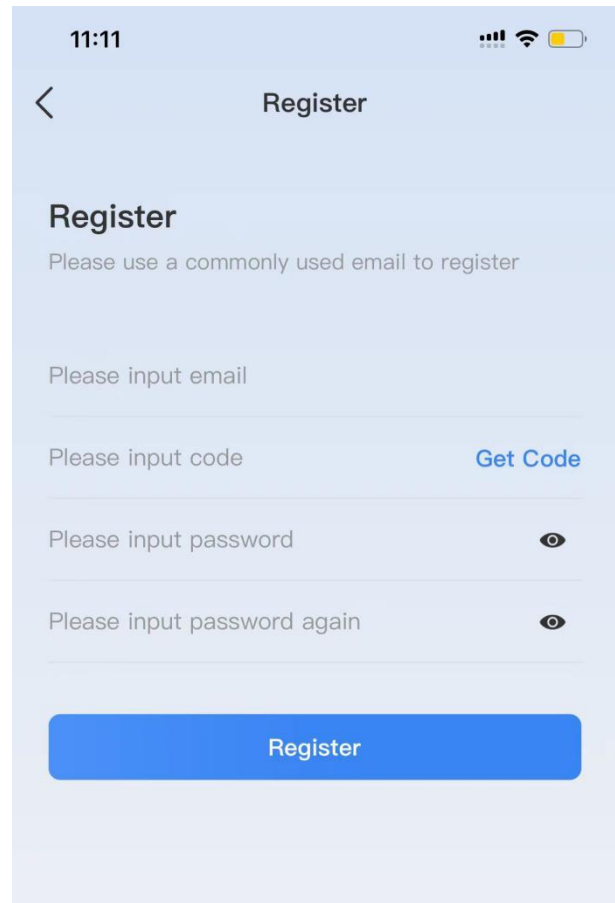
2. Login

2.1. Log in the EWIND Cloud App

You can log in using a verification code or password. If you do not have an account, please register an account first.



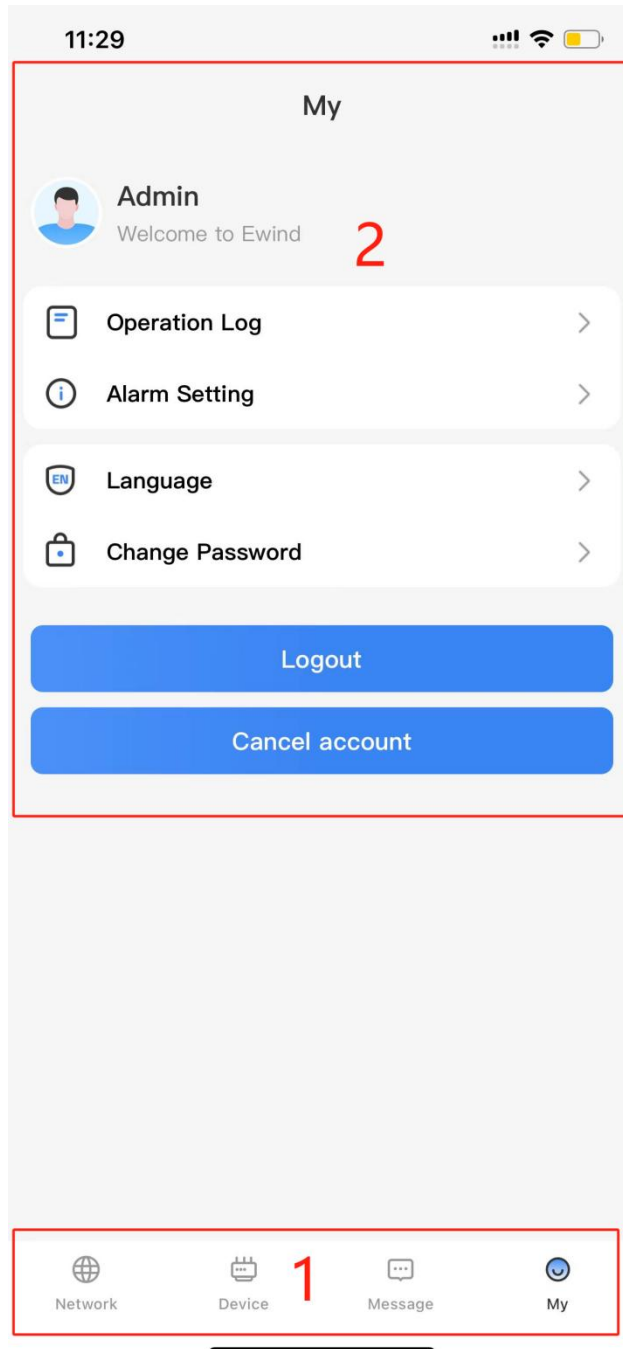
Pic 1-1-1: Verification Code / Password Login Screen



Pic 1-1-2: Registration Screen

2.2. EWIND Cloud App User Interface

The app interface provides management features for switches, alarm notifications, and related information.



Pic 2-2: Cloud App Interface

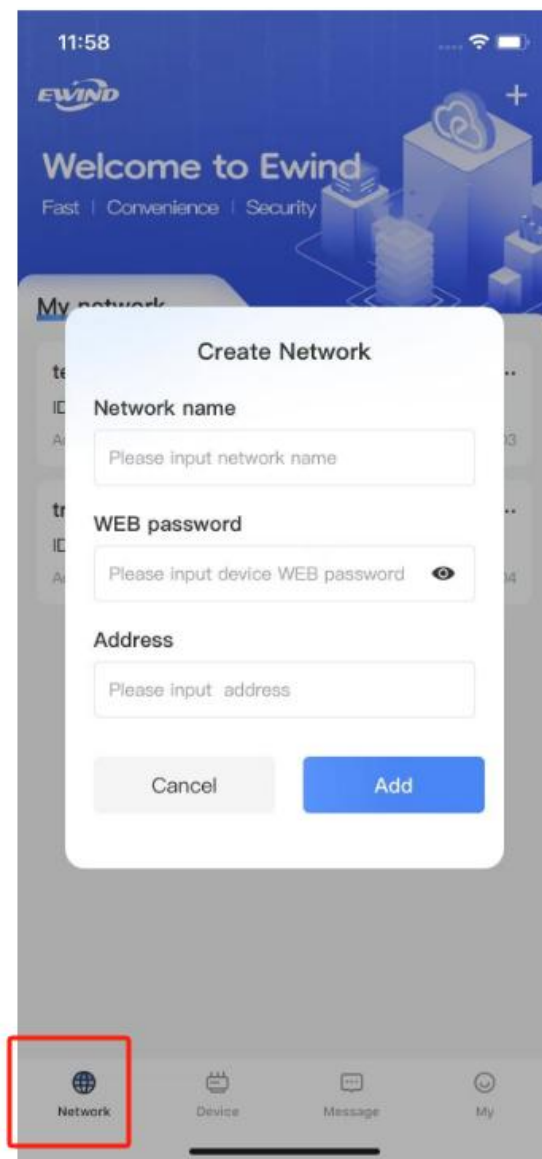
Section	Description
Section 1	4 main menus: Network, Devices, Messages, and My Profile.
Section 2	Configuration and display page.

Figure 2-2: Interface Description

3. Network

3.1. Add My Network

To create a network, click “Network” → “Add Network”.

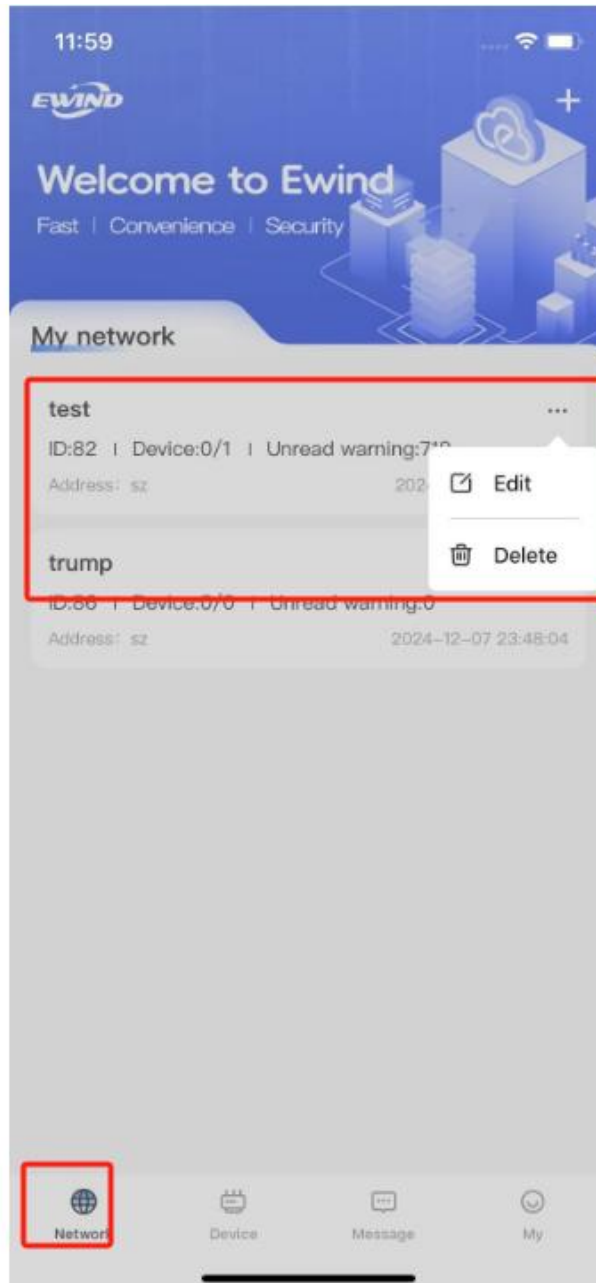


Pic 3-1-1: Create Network

Item	Description
Network Name	Enter the name of the network.
Web Management Password	Enter the password.
Address Information	Enter address details.
Cancel	Cancel network creation.
Confirm to add	Confirm and add the network.

Figure 3-1-1: Create Network Description

After creating a network, you can access **"My Network"** to manage it.



Pic 3-1-2: My Network

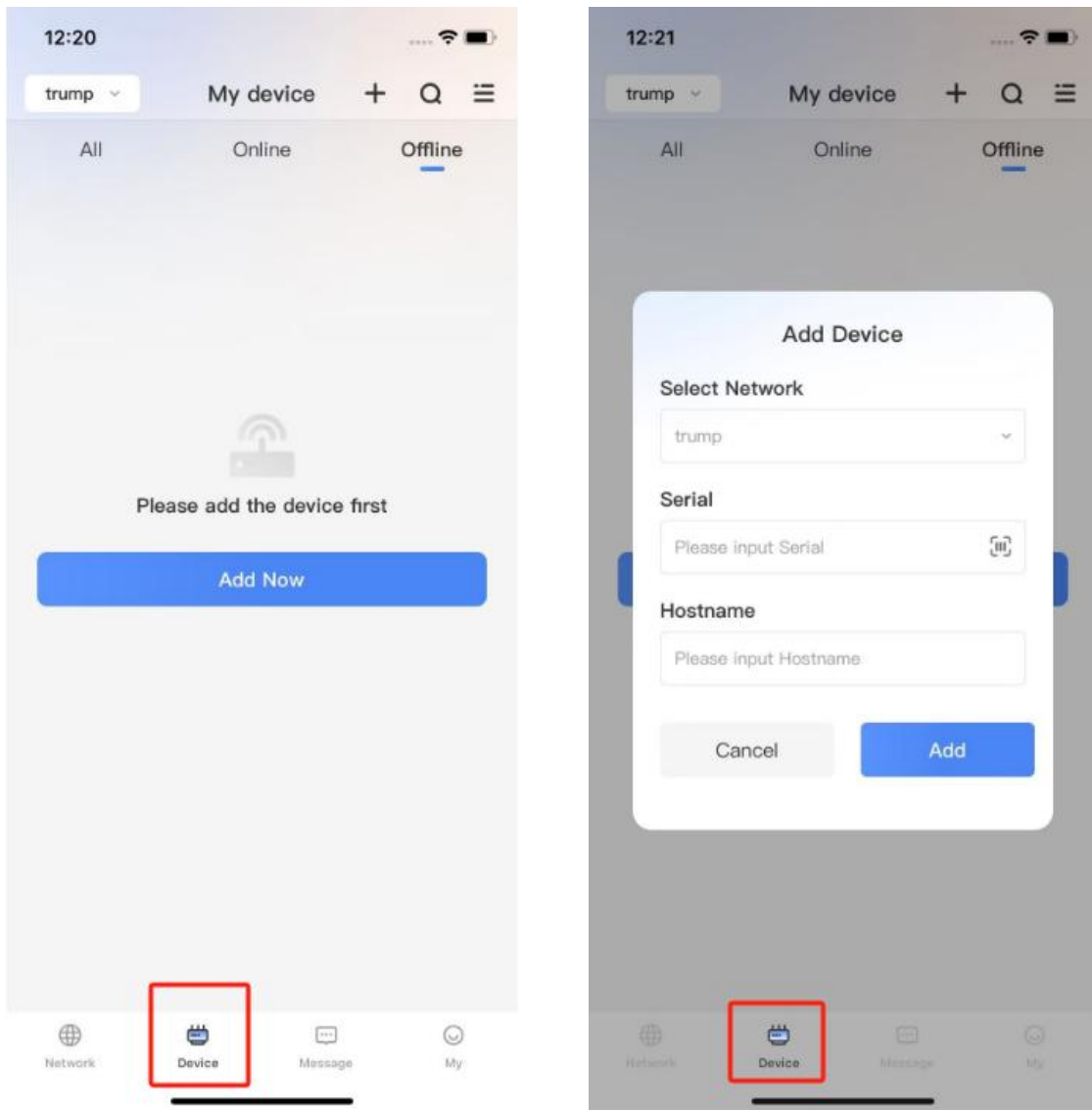
Item	Description
Edit	Edit the network.
Delete	Delete the network.
ID	View the device ID.
Devices	View the number of devices.
Unread Alarms	View the count of unread alarms.
Click ID	Access "My Devices".

Figure 3-1-2: My Network Description

4. My Devices

4.1. Add a Device

To add a device to the app, click “Devices” → “Add Now”.



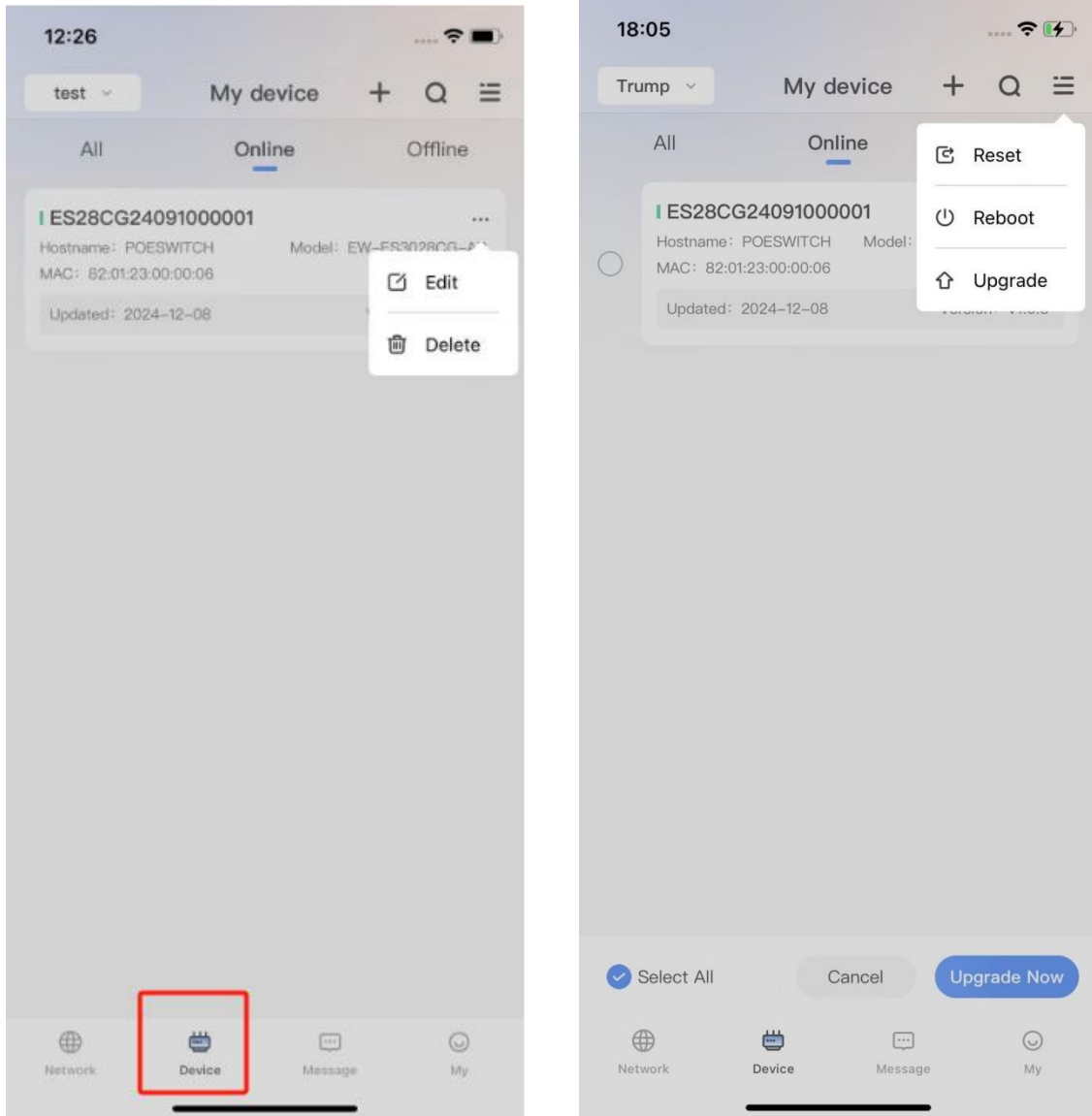
Pics 4-1-1&2: Add Devices

Item	Description
Add Devices	Select "Add Now".
	Enter the network name.
	Enter the device code.
	Enter the device name.
	Cancel adding the device.
	Confirm and add the device.

Figure 4-1-1: Add Devices Description

4.2. My Devices

Select a network to view / edit devices under that network, including all devices, online devices, and offline devices.



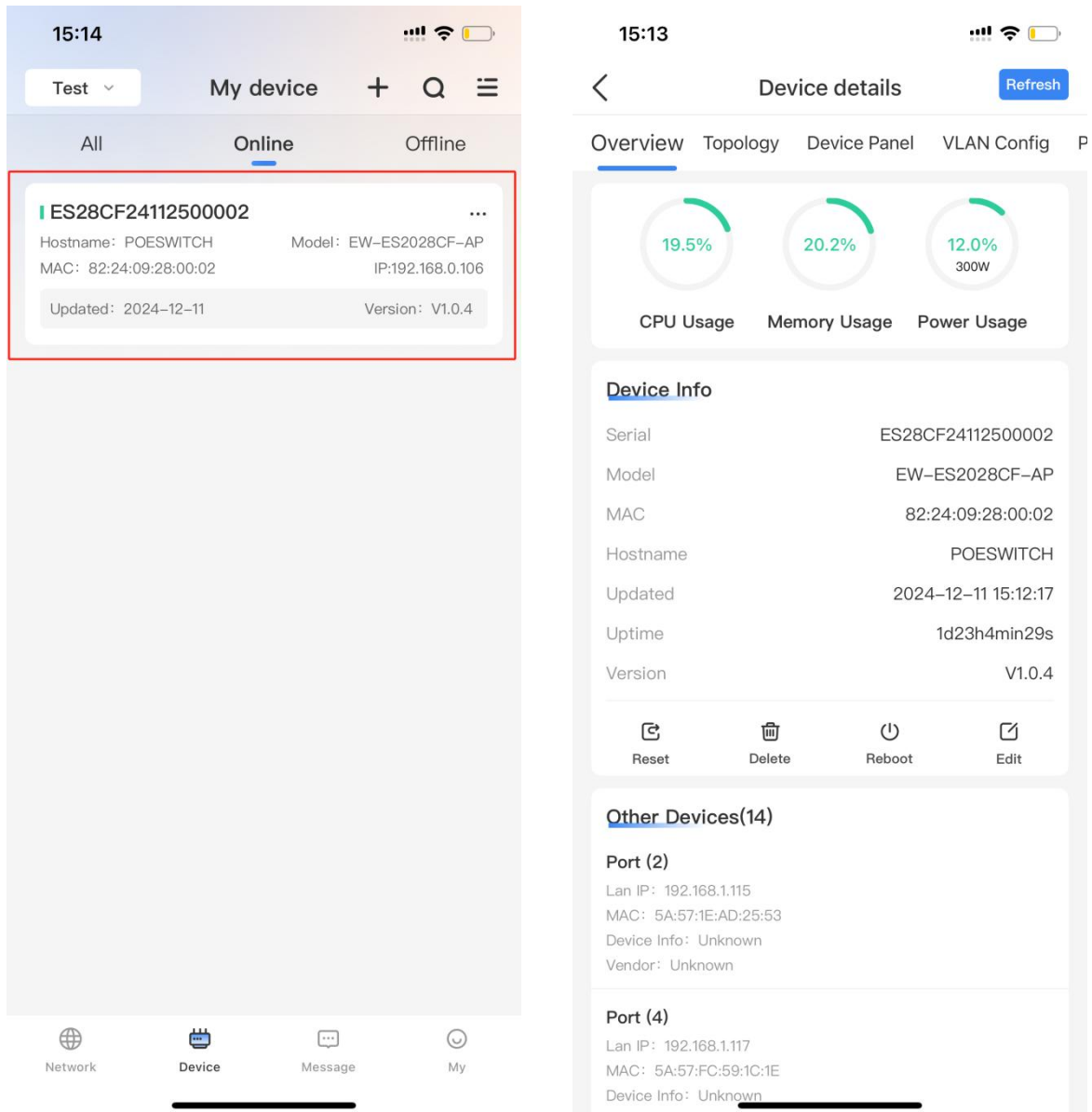
Pics 4-2-1&2: Edit My Devices

Item	Description
My Devices	Choose a network to view devices.
Show All	Display all devices.
Show Online	Display online devices only.
Show Offline	Display offline devices only.
Device Info	View details such as status, model, MAC address, name, software version, and more.
Actions	Edit, delete, reset, reboot, or upgrade devices.

Figure 4-2-1: Edit My Devices Description

4.2.1. Overview

Click on the device serial number to access the “Device Details” → “Overview” section.



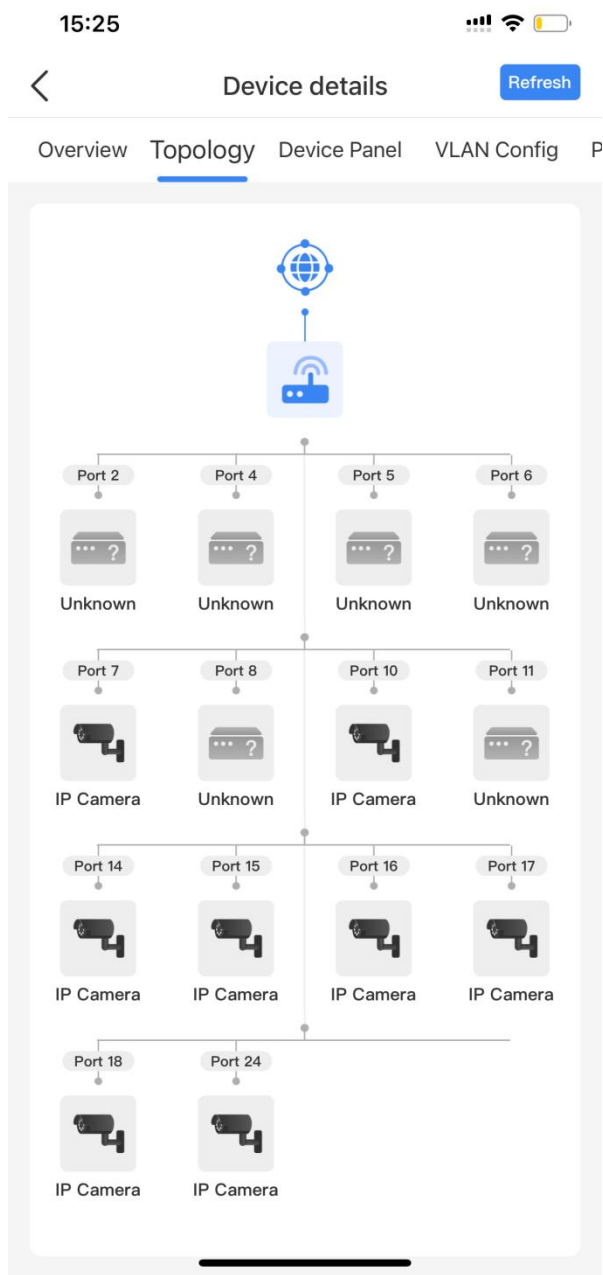
Pic 4-2-1-1&2: Device Overview

Item	Description
Overview	View CPU, memory usage, and current utilization.
Device Info / Details	View device serial, model, MAC address, name, updated time, uptime, and software version.
Actions	Reset, delete, reboot, or edit the device info.
Connected Devices	View port, management address, MAC address, and vendor info.
Refresh	Refresh the data.

Figure 4-2-1-1: Device Overview Description

4.2.2. Topology

Access the “**Device Details**” → “**Topology**” to view the network structure.



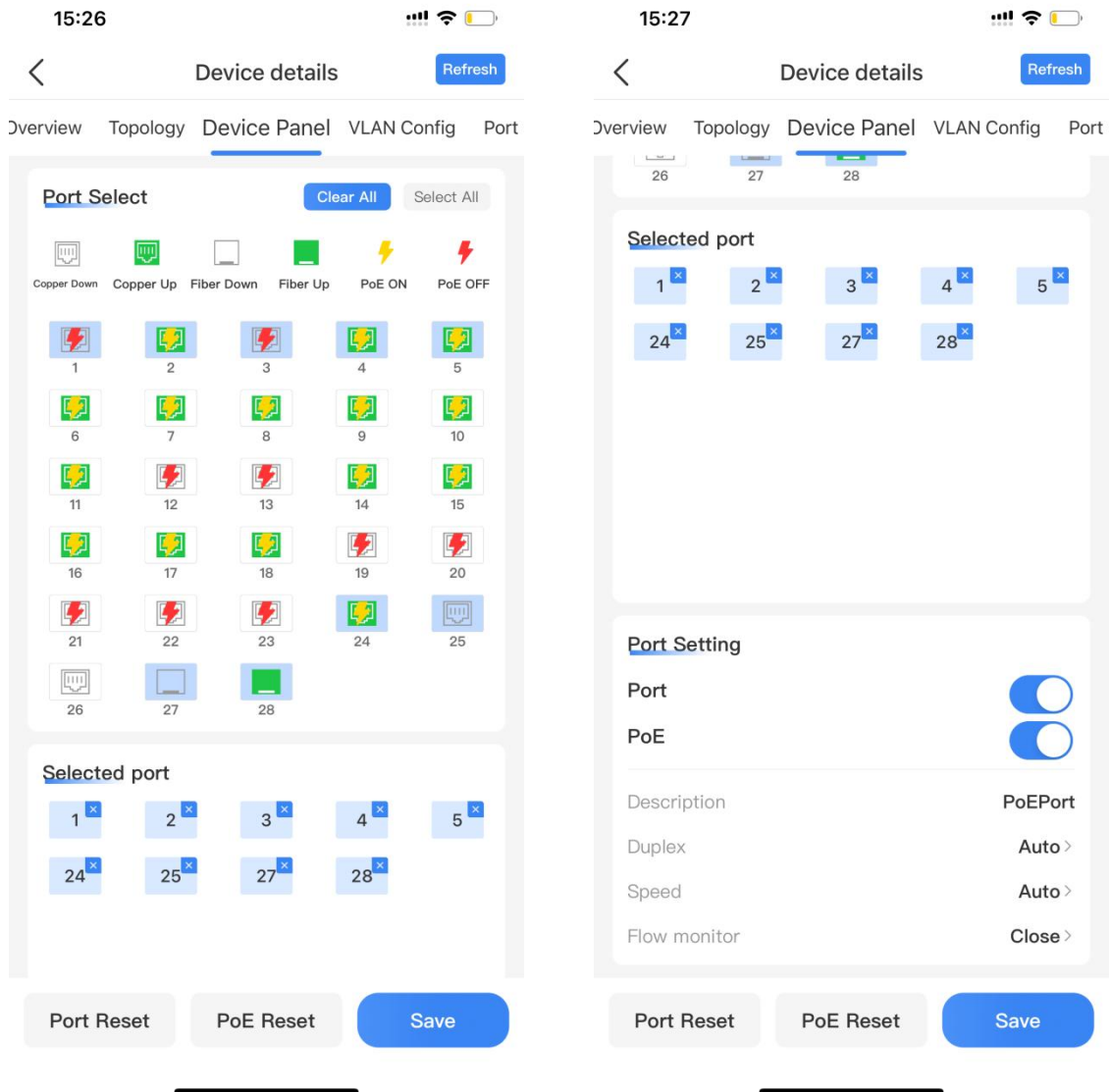
Pic 4-2-2-1: Topology

Item	Description
Internet	Represents the internet connection.
PoE Switch	The POE switch obtains an IP address to connect.
Cameras	Cameras connected under the POE switch.
Refresh	Update the topology data.

Figure 4-2-2-1: Topology Description

4.2.3. Device Panel (Switch)

Go to “Device Details” → “Switch Panel” to configure ports.



Pics 4-2-3-1&2: Port Configuration

Item	Description
Port Status	View if copper / fiber ports are connected or disconnected.
POE Status	Check if POE is enabled or disabled.
Actions	Reset and select ports.

Figure 4-2-3-1: Device Panel Description

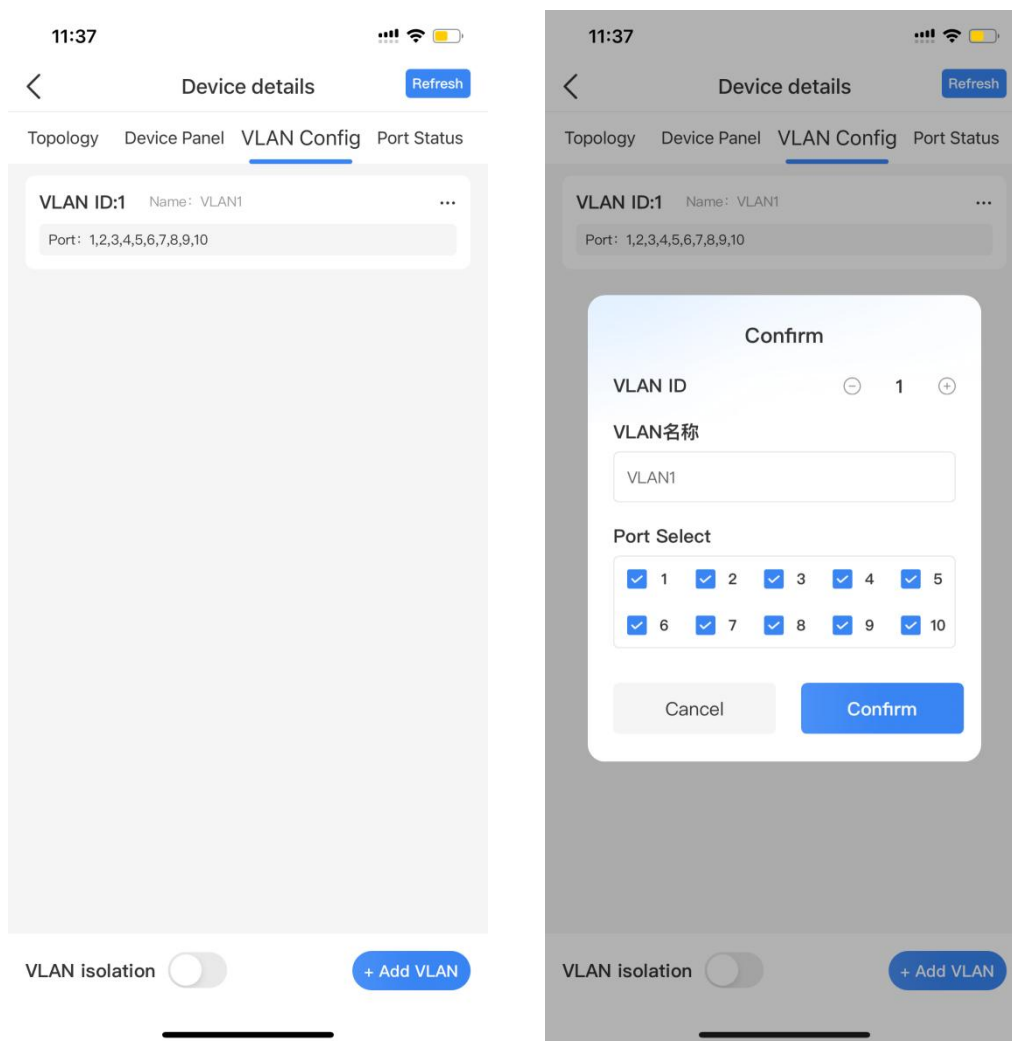
Item	Description
Selected Ports	View selected ports.
Actions	Reset ports, enable POE, adjust duplex settings, and more.
Port Speed	Set to Auto, 10/100/1000 Mbps.

Flow monitor	Set to OFF, Upper or Lower.
Monitoring Thresholds	Set the traffic threshold (10 Kbps–1 Gbps).
Interval	Set the monitoring interval (1–3600 seconds).
Exception Occurs	Upload exception, Restart the interface or Disable the interface.

Figure 4-2-3-2: Port Construction Description

4.2.4. VLAN Configuration

Access “Device Details” - “VLAN Config” to enable or disable VLAN isolation.



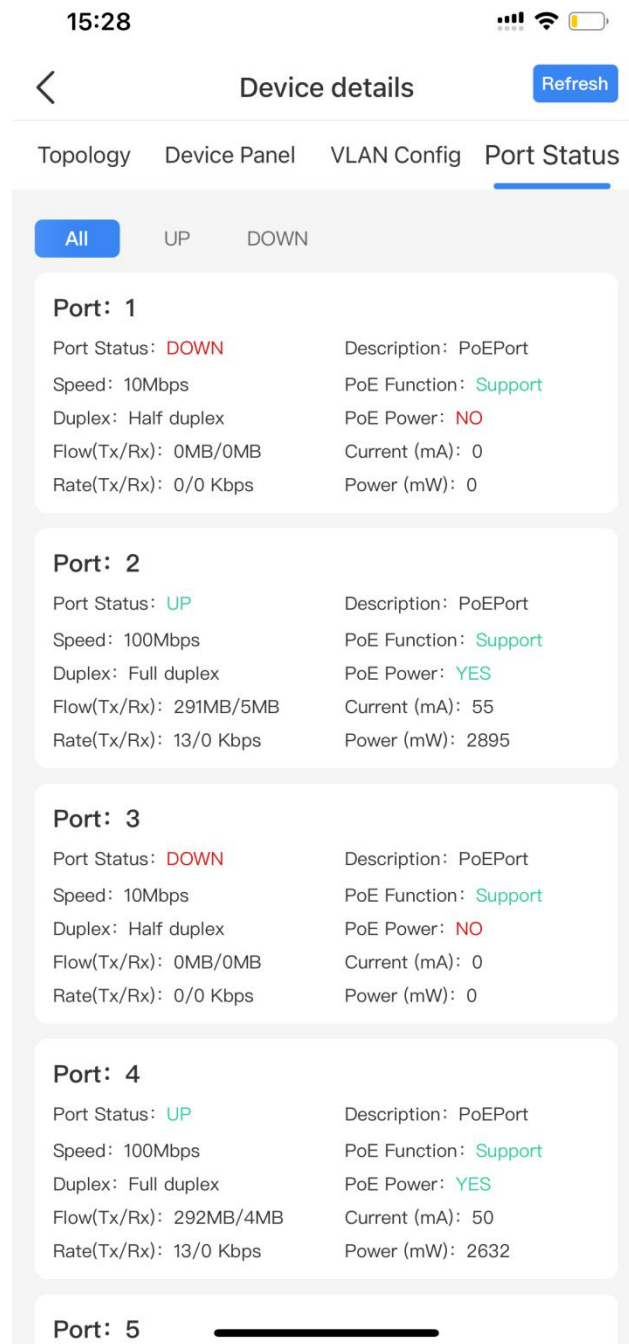
Pics 4-2-4-1&2: VLAN Configuration

Item	Description
VLAN Isolation	Enable or disable VLAN isolation.
Configure	Add VLAN name, select ports.

Figure 4-2-4-1: VLAN Configuration Description

4.2.5. Port Status

Check port status in “Device Details” - “Port Status”.



Pic 4-2-5-1: Port Status

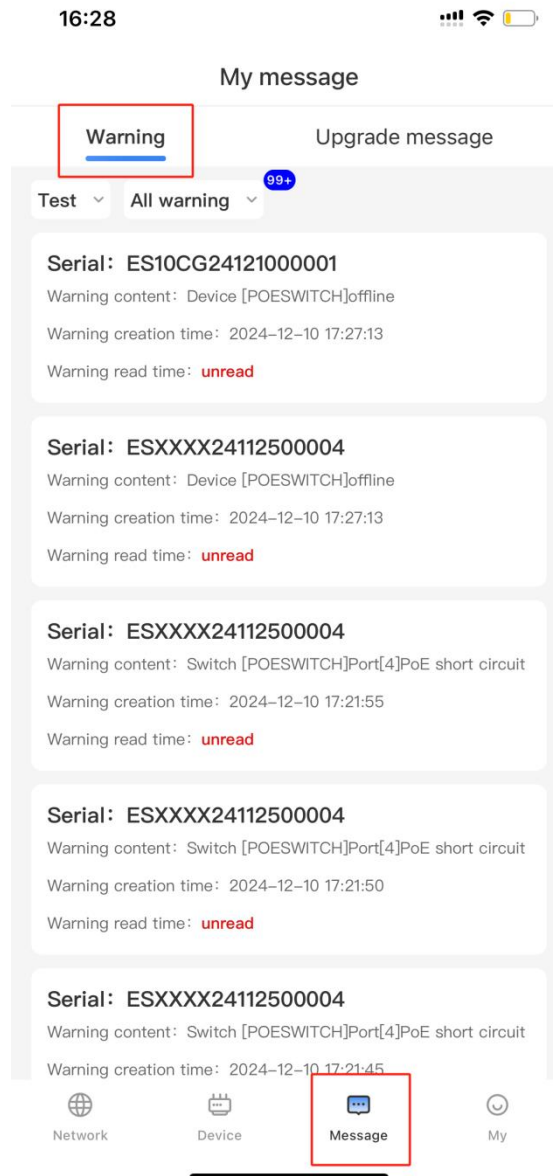
Item	Description
Port Status	Check if the port is connected or disconnected.
Port Info	Show all ports information (Speed, PoE function, Duplex model, PoE power, Flow, Electric current, Speed rate and Power etc.)

Figure 4-2-5-1: Port Status Description

5. Messages

5.1. Alarm Notifications

View alarm notifications under “Messages” - “Alarm Messages”.



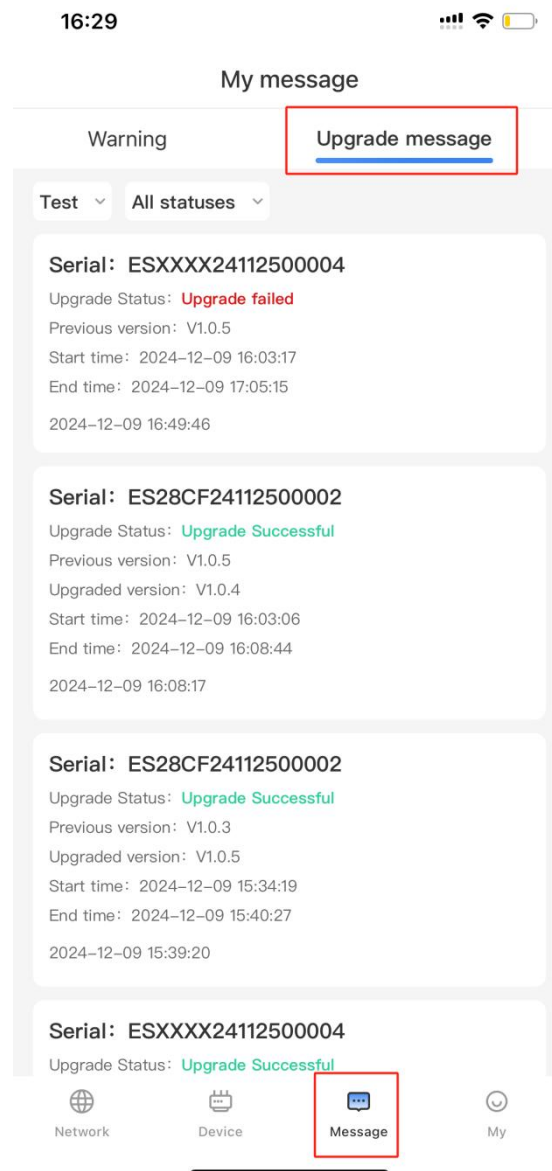
Pic 5-1-1: Alarm Notifications

Item	Description
Network Selection	Choose a network.
Alarm Type	View all, read, or unread alarms.
Mark as Read	Click on a notification to mark it as read.
Device Serial	View the device serial.
Alarm Content	Details of the alarm.
Timestamps	View creation and read times.

Figure 5-1-1: Alarm Notifications Description

5.2. Upgrade Notifications

View upgrade notifications under “Messages” - “Upgrade Messages”.



Pic 5-2-1: Upgrade Notifications

Item	Description
Network Selection	Choose the network to view updates.
Upgrade Status	View all statuses: In Progress, Successful, or Failed.
Mark as Read	Click on a notification to mark it as read.
Device Serial	Displays the device serial.
Upgrade Status	Check the current upgrade status.
Version Before Upgrade	View the software version prior to the upgrade.
Version After Upgrade	View the software version after the upgrade.

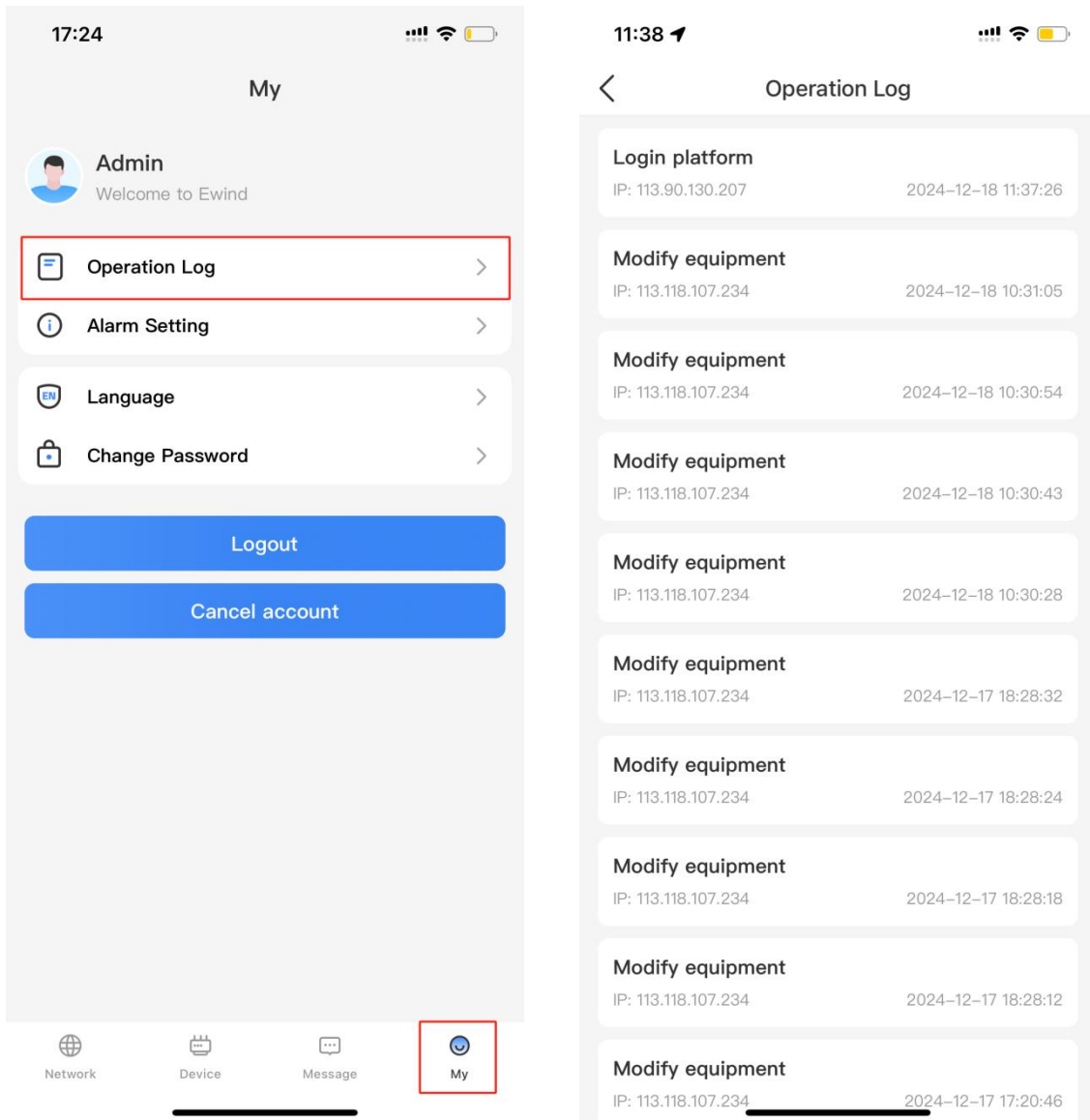
Upgrade Start/End Time	Displays the start/end time of the upgrade.
Creation Time	Shows the time the upgrade status was recorded.

Figure 5-2-1: Upgrade Notifications Description

6. My

6.1. Operation Logs

Access “My” - “Operation Logs” to review system actions.



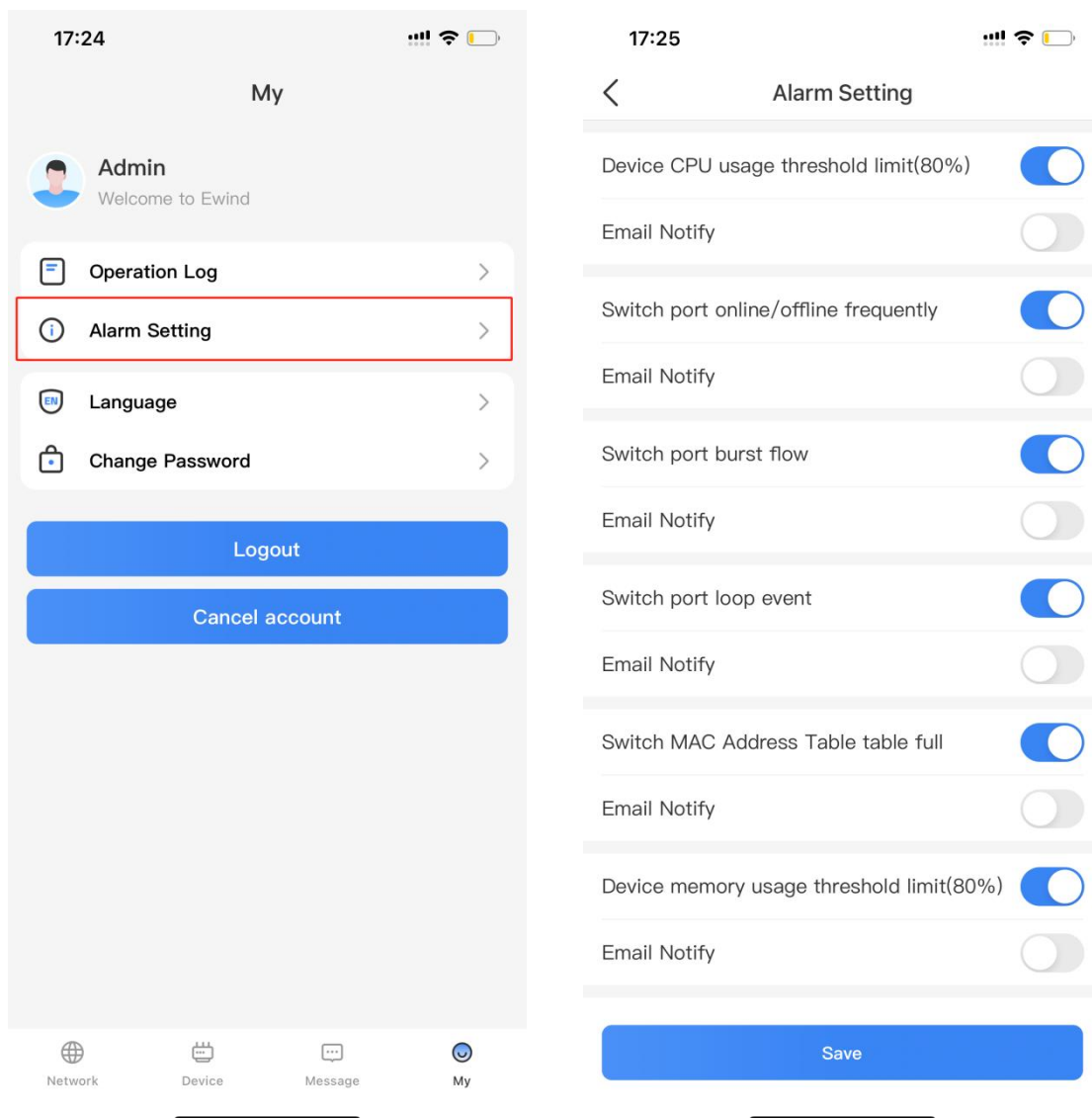
Pics 6-1-1&2: Operation Logs

Item	Description
Operation Logs	View the details of operation logs.

Figure 6-1-1: Operation Logs Description

6.2. Alarm Settings

Configure alarm notifications in **My Profile > Alarm Settings**.



Pic 6-2-1&2: Alarm Setting

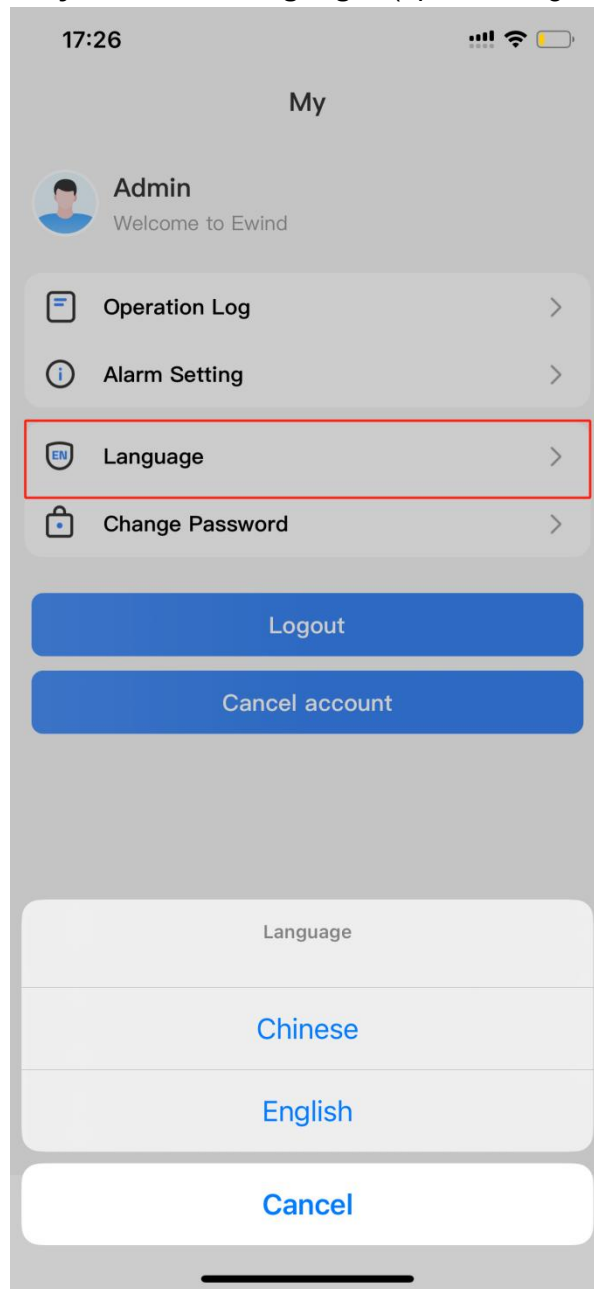
Item	Description
Alarm Selections	Device CPU usage threshold limit (80%) Switch port online / offline frequently Switch port burst flow Switch port loop event Switch MAC Address Table table full Device memory usage threshold limit (80%) Switch port packet loss alarm Switch PoE chip fault Switch port PoE power supply abnormal Switch port mosfet fault Switch port mosfet and resistance fault Switch port PoE power Overload

	Switch port PoE power Short Circuit Switch port PoE status changed to OFF Switch port PoE status changed to ON Switch PoE power Overload Switch port detect flow greater than threshold Switch port detect flow less than threshold Switch port link status changed to DOWN Switch port link status changed to UP Switch reboot unusually Switch broadcast storm Device Offline Device Online Device On / Reboot All devices offline
Alarm Enable	Enable or disable alarms.
Email Notify	Enable or disable email notifications.

Figure 6-2-1: Alarm Settings Description

6.3. Language

Change the app language in “My Profile” - “Language” (options: English, Chinese).



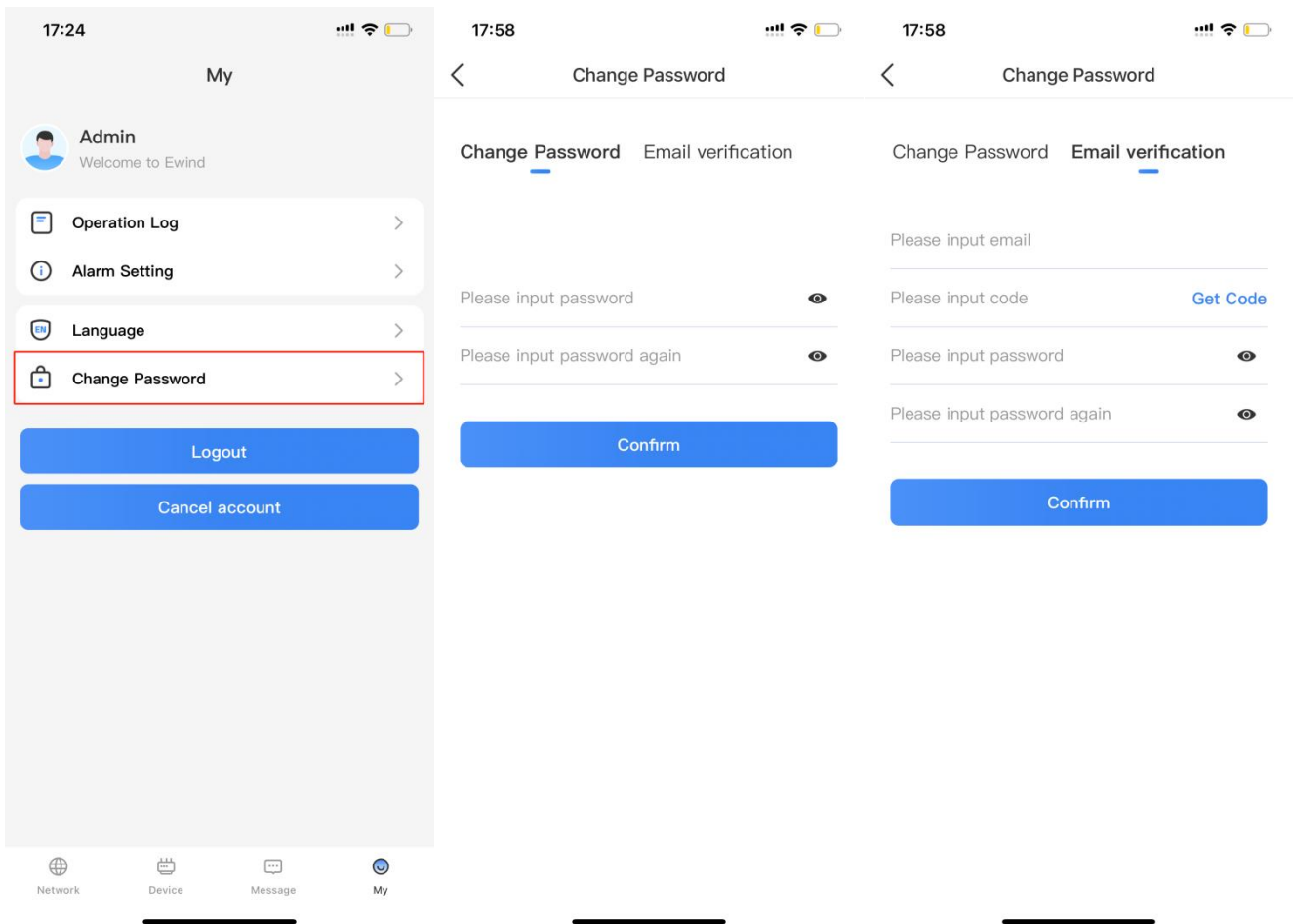
Pic 6-3-1: Language Setting

Item	Description
Language Options	English or Chinese.

Figure 6-3-1: Language Setting Option

6.4. Change The Password

Update your account password in “My Profile” - “Change Password”.



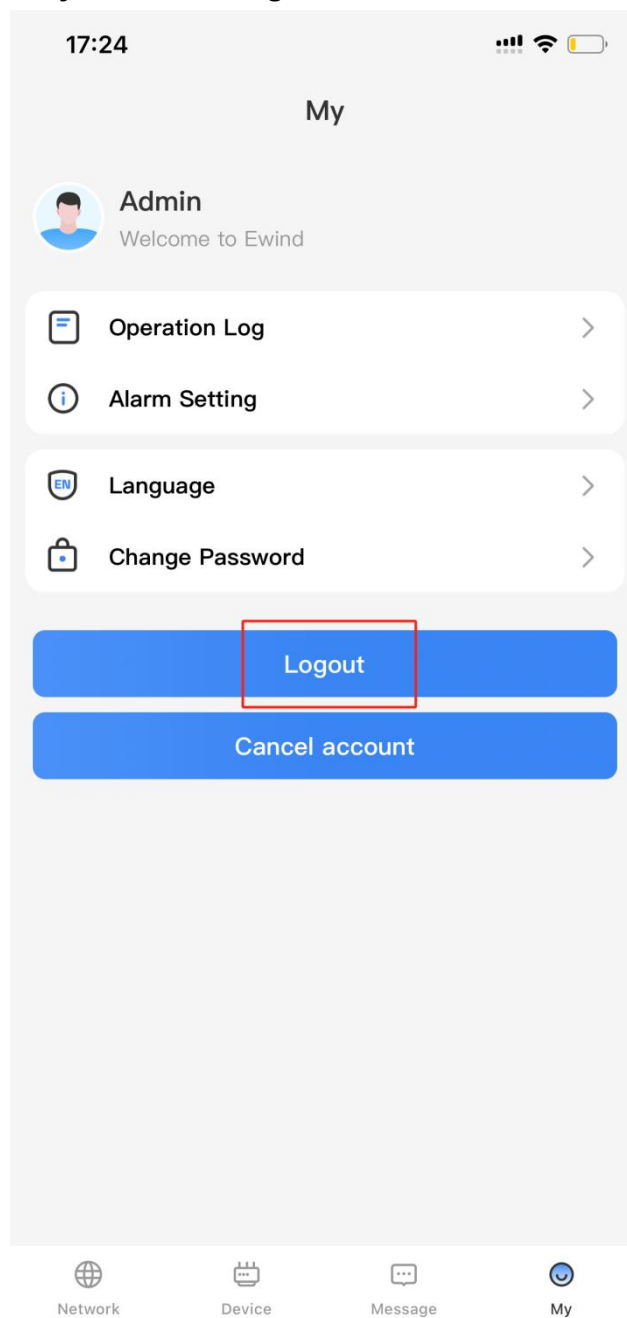
Pics 6-4-1&2&3: Change Password

Item	Description
Password Update	Enter and confirm the new password.
Email Verification	Use your email to verify and update.

Figure 6-4-1: Change Password Description

6.5. Logout

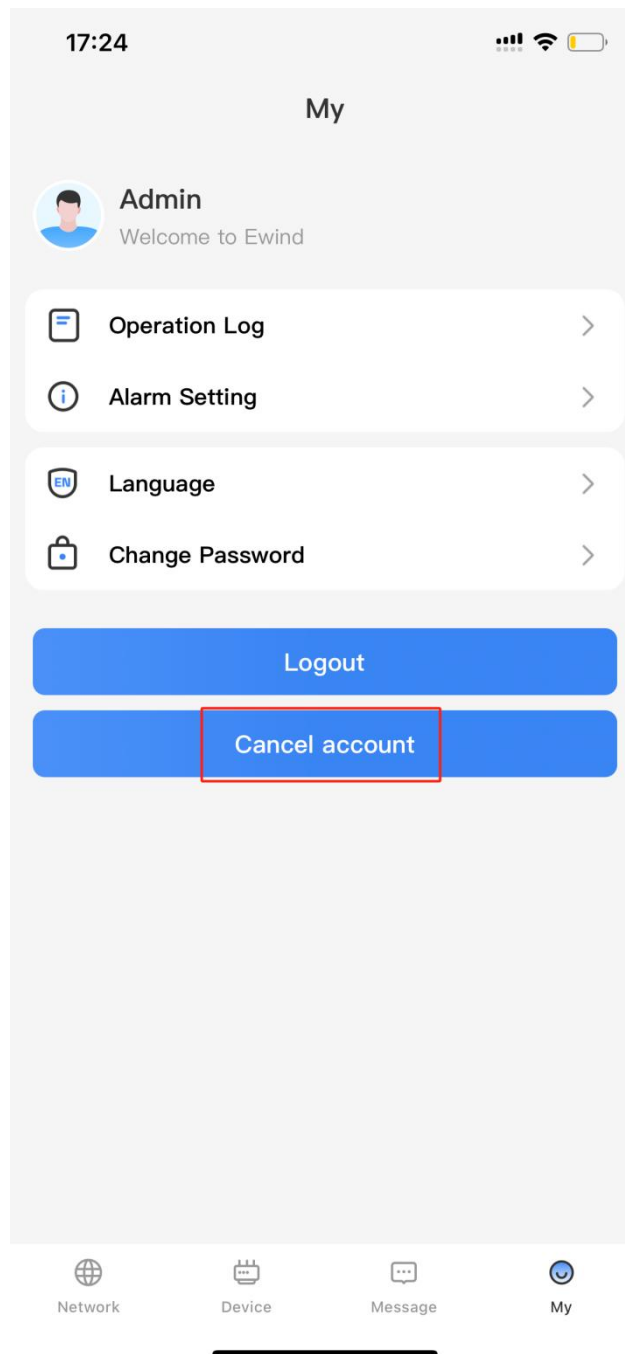
Log out of your account via “My Profile” -> “Logout”.



Pic 6-5-1: Log out the App

6.6. Cancel / Delete Account

To cancel / delete your account, go to “My Profile” - “Delete Account”.



Pic 6-6-1: Cancel Account

Item	Description
Logout	Log out the current account.
Cancel Account	Cancel and delete your current account.

Figure 6-5/6-1: Account Description