

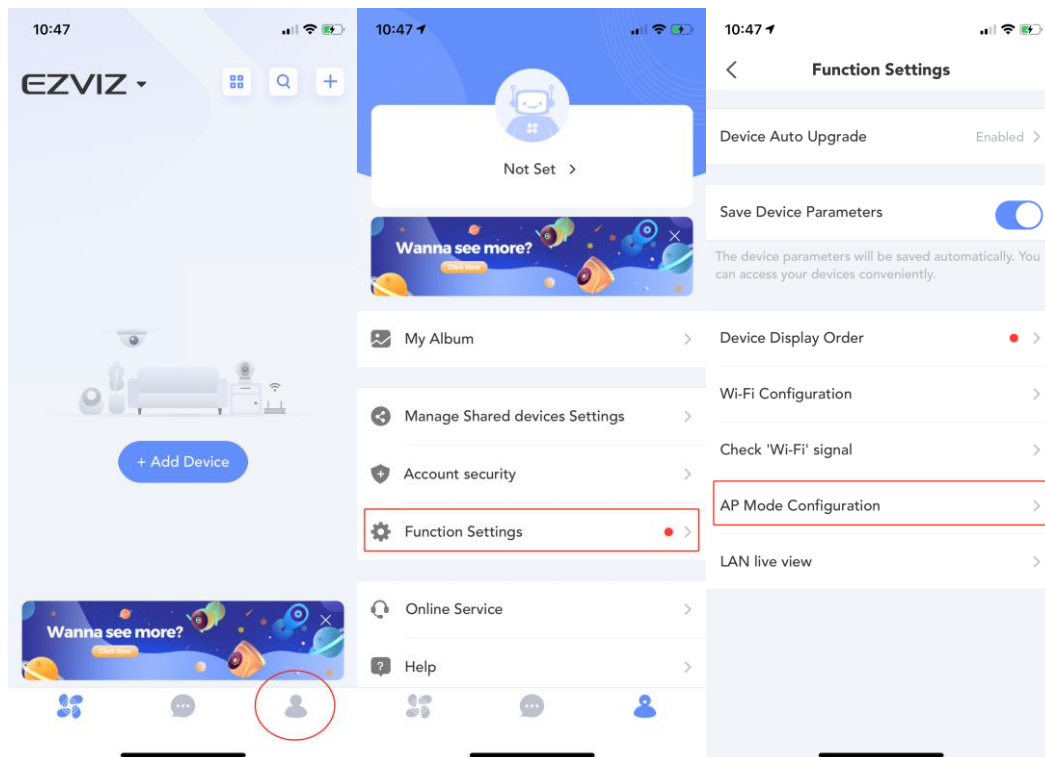
## How to convert EZVIZ C6N to a webcam

### You'll need:

- One EZVIZ C6N or TY1/TY2
- A laptop/PC with the SplitCam installed (<https://splitcam.com/download>)
- A stable Wi-Fi network

### Part 1. Configure C6N so that the device and the laptop are in the same LAN

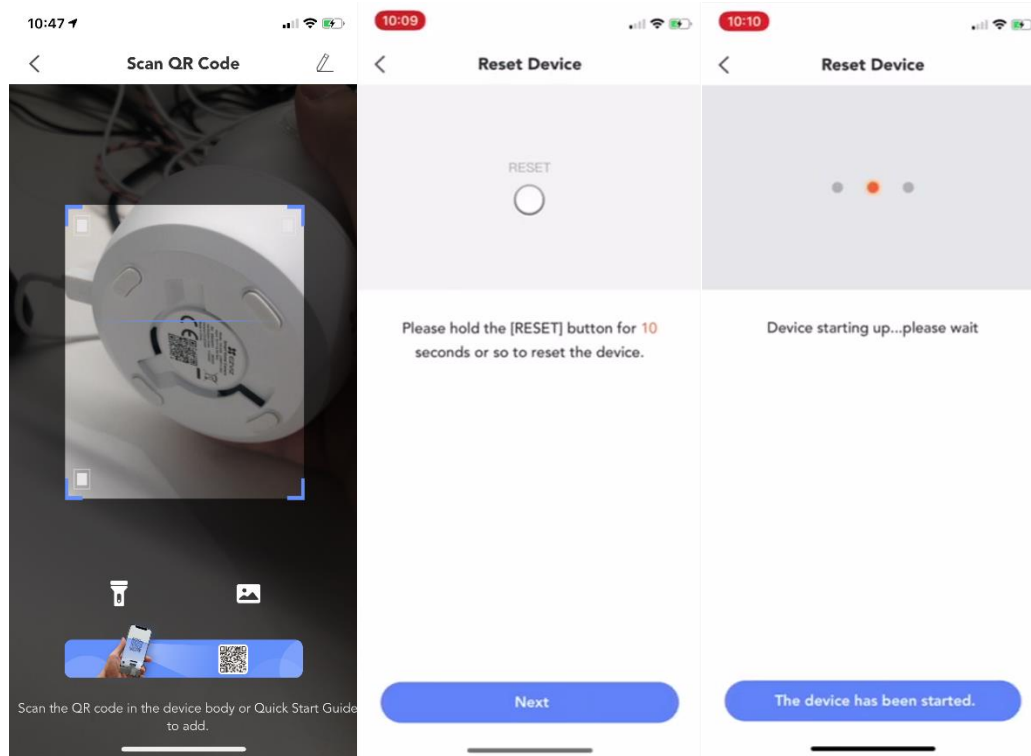
1. Open EZVIZ APP, tap 'Function Settings' → 'AP Mode Configuration'



2. Following the prompt to finish configurations;

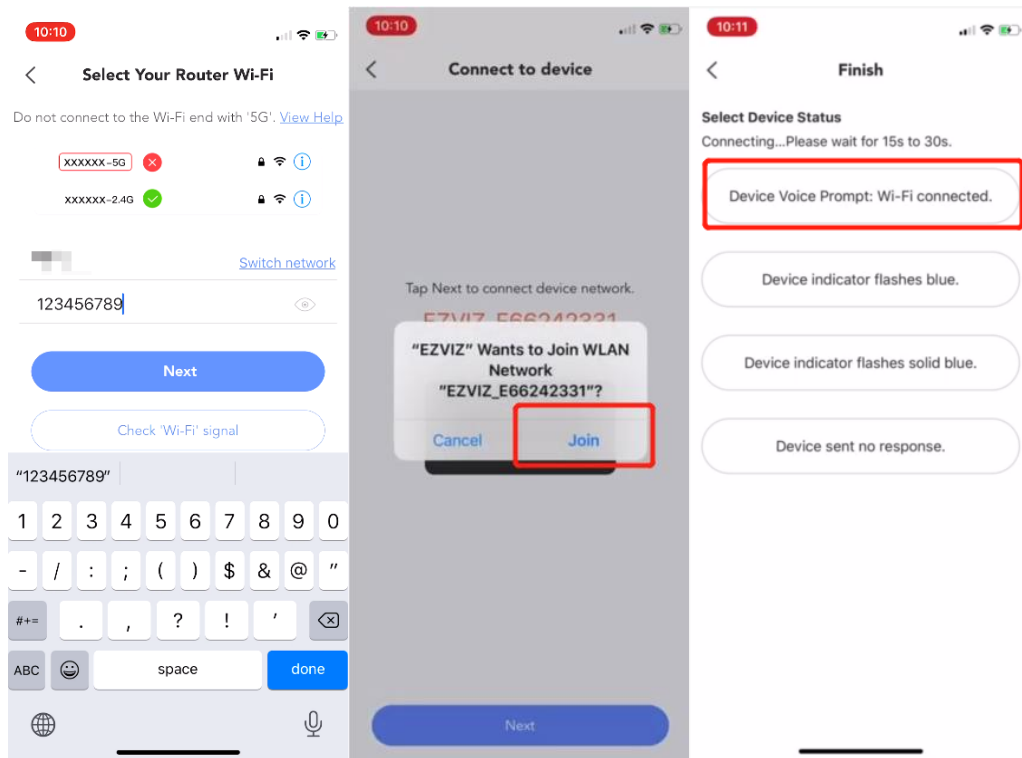
-Scan the QR code at the bottom of the device;

-Press and hold the Reset button on the camera (>10s) until you hear the voice prompt "reset successfully."



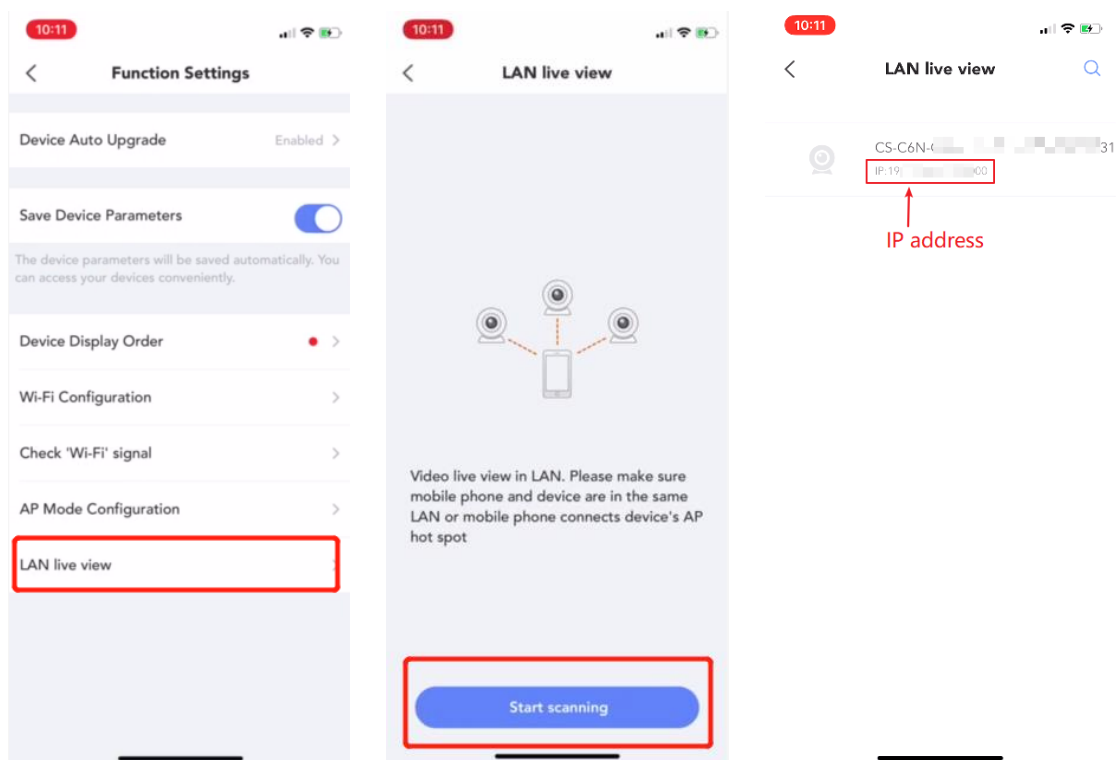
3. Configure Wi-Fi connection for C6N, make sure it's a 2.4GHz Wi-Fi network;

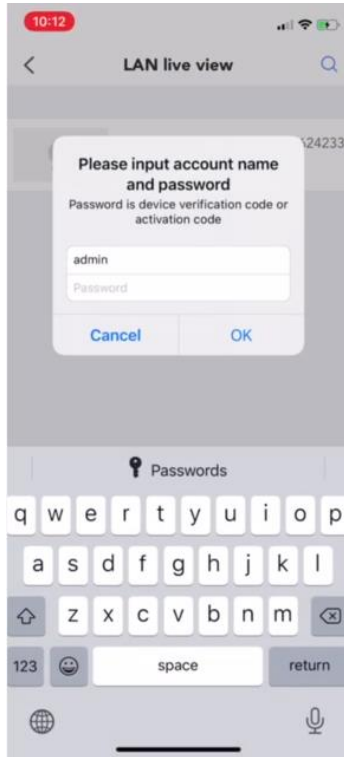
-Tap on the first option after hearing "Wi-Fi connected"



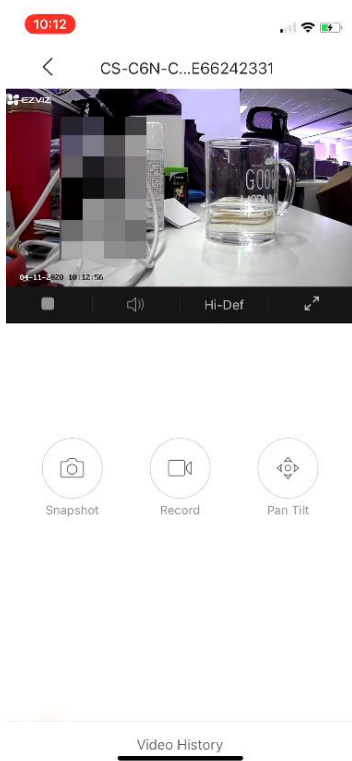
4. Tap 'LAN live view', then choose 'Start scanning'

  - Mark down the IP address and tap on the device column;
  - Enter the user name and password:
  - the default user name is 'admin'
  - the password is the Verification Code printed on the device label
  - After entering the password, tap 'OK'



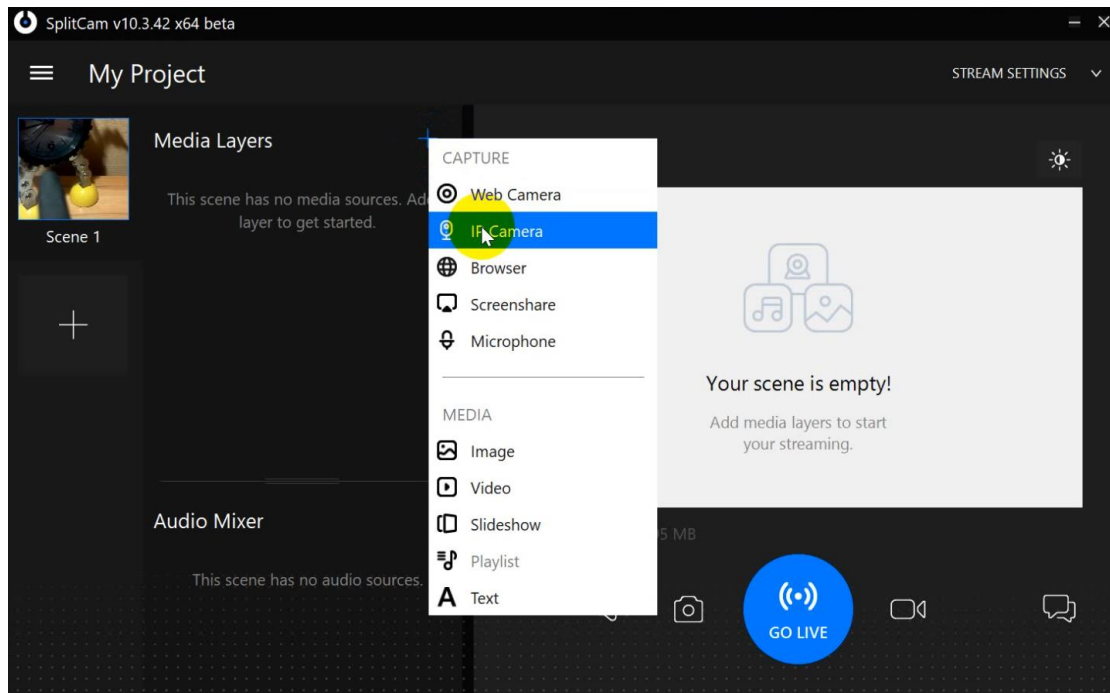


### LAN configuration is done



## Part 2. Configure SplitCam in order to get the video stream

1. Open SplitCam and choose 'IP Camera'



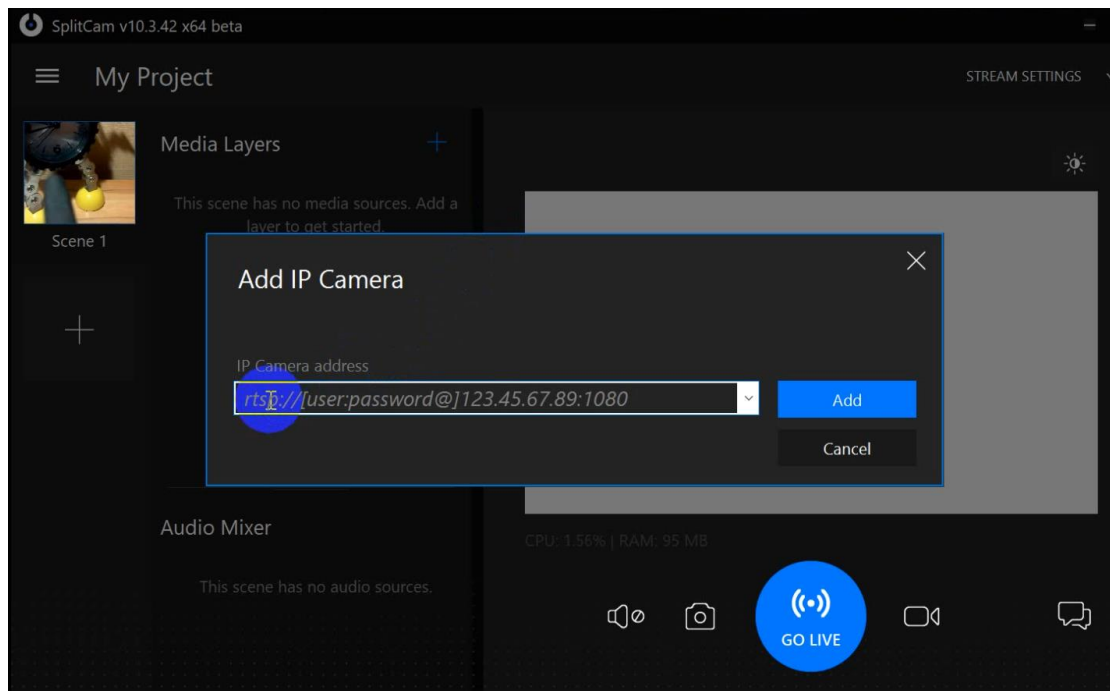
2. Enter the rtsp stream address of the device::

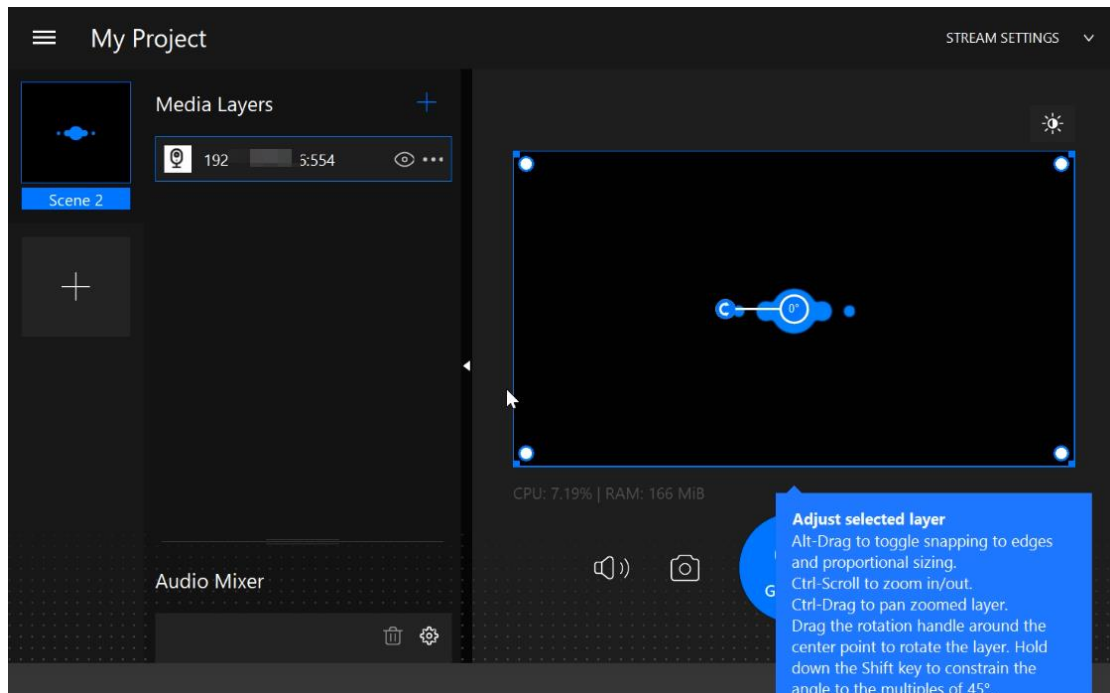
rtsp://admin:(Your Verification Code)@(IP address of your camera):554/ch1/main (main stream)

rtsp://admin:(Your Verification Code)@(IP address of your camera):554/ch1/sub (sub stream)  
such as:

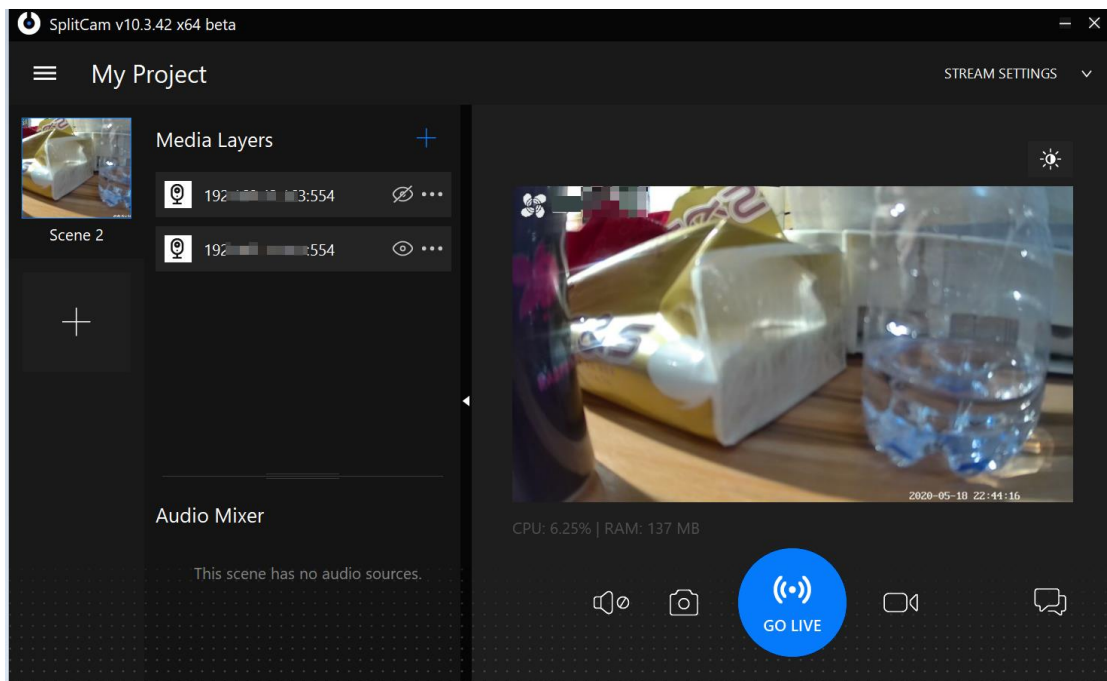
rtsp://admin:ABCDEF@192.123.22.123:554/ch1/main

rtsp://admin:ABCDEF@192.123.22.123:554/ch1/sub





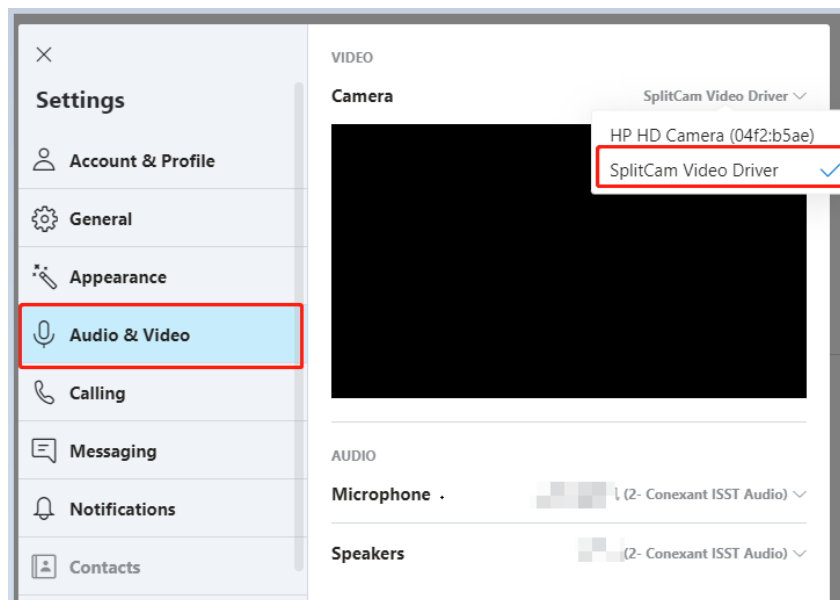
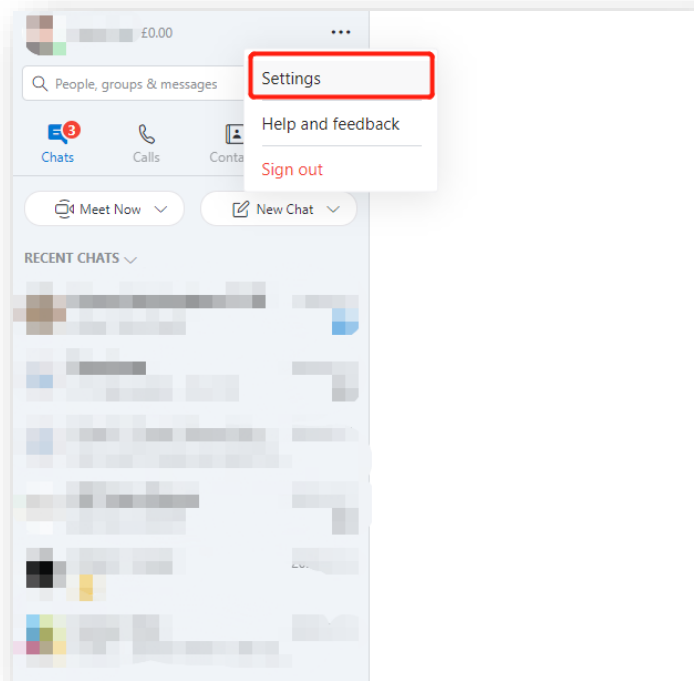
3. You can choose either main stream or sub stream of the device based on your needs.  
 \*Typically, main stream is 1080P and sub stream is 4CIF



### Part 3. Configure video conferencing software

#### On Skype

Open Skype, choose Setting → Audio & Video → Camera;  
Choose SplitCam Video Driver



It's compatible with Zoom as well, basically would be the same steps:  
Open Zoom → Settings → Video → Camera → Choose 'SplitCam Video Driver'

*I've been tested it out on Windows10, but I personally don't think macOS support this function at this moment. It should also compatible with previous Windows versions, too.*