

DS-3WF0EC-5ACT(B) 5 GHz 867 Mbit/s 500 m Wireless Bridge for Elevators



The dual wireless bridge can be used in industries such as wireless video security, railways, transportation, energy, and others, for wireless video/data transmission, wireless coverage, building wireless backbone networks for network operators, Wi-Fi coverage, rural information network construction, and wireless network coverage. The device's long-range transmission ensures multi-channel HD video transmission.

Up to 500 m radio range

• 867Mbps 802.11ac wireless bridge

Integrated 8 dBi 2 x 2 MIMO antenna

Visualized Topology Management

Standard PoE input and output

Plug -and-Play

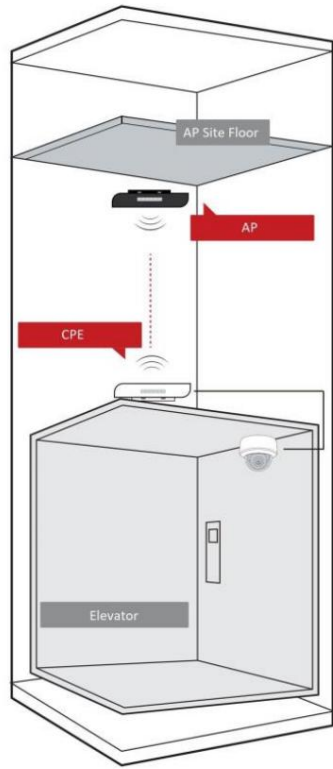
Specifications

Generally	
Product dimensions (W × H × D)	90.8mm × 187.87mm × 57.87mm (3.58" × 7.4" × 2.28")
Package dimensions (W × H × D)	256mm × 231mm × 86mm (10.07" × 9.09" × 3.38")
Net weight	0.26 kg (0.57 lb) per device
Gross weight	1.1 kg (2.43 lb)
Packing list	2 wireless bridges, 2 PoE power supplies, 2 power cables, 1 quick start guide, 1 information leaflet For compliance and safety, 4 adhesive tapes
Packaging method	Pack in pairs
Operating temperature	-30 °C to 65 °C (-22 °F to 149 °F)
Operating humidity	5% to 95% (no condensation)
Storage temperature	-40 °C to 80 °C (-40 °F to 176 °F)
Storage humidity	5% to 95% (no condensation)
Installation mode	Mast assembly
Intrusion protection	IP55
Power consumption	2.43 W for a typical (1-channel 2-megapixel IPC), max. 3.4 W
Wireless parameters	
Maximum transmission rate of Air interface	~ 867 Mbps
radio standard	IEEE 802.11/a/n/ac
Operating frequency band	5150MHz ~ 5250MHz, 5250MHz ~ 5350MHz, 5470MHz ~ 5725MHz, 5725MHz ~ 5825 MHz
Antenna amplification	8 dBi
Antenna angle	(H) Beam width [3 dB] 50° (V) Beam width [3 dB] 50°
Transmit power	22 dBm @11ac MCS0 (Note: Transmit power may vary depending on local regulations vary.)
sensitivity	-84 ±2 dBm@AC80-MCS0
throughput rate	PTP: 80Mbps/0.2km (AC80), 40Mbps/0.5km (AC80)
PoE power supply	
PoE port	AP: LAN1 802.3af/at PoE IN; CPE: LAN1 passive PoE input, LAN2 802.3af PoE output
PoE power (total)	10 watts
PoE distance	100m
Hardware parameters	
Network interface	2 × 10/100 Mbps RJ45 ports
LED display	Power indicator, LAN indicator, signal strength indicator
Reset	Hardware reset button
power supply	48V PoE; See physical diagram for further information. Interface at the bottom.
Software function	
Application function	IFM, IPM, DFS, TPC
Channel width	20/40/80 MHz
Channel selection	Automatic/manual selection
Network protocols	NTP (Network Time Synchronization), SADP (Automatic IP Address Search), HTTPS (Web administration)

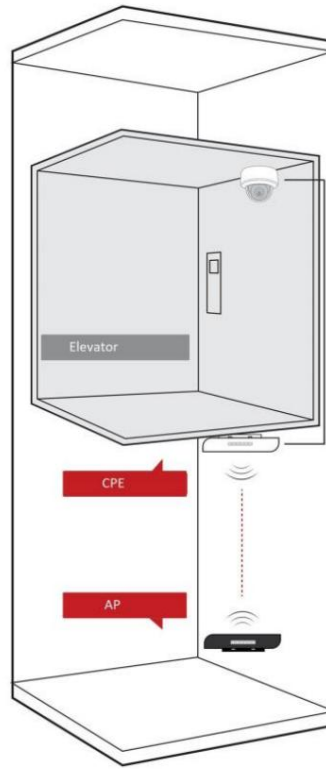
Security mode	WPA2-PSK
Safety mechanism	Hidden wireless network name
Management method	Web, iVMS-4200, HCP
Upgrade	Web, iVMS-4200, HCP
System log	Syslog, information from the control center
HPP	<p>Support one-click activation and remote management via Hik Partner Pro. Supported features:</p> <ol style="list-style-type: none"> 1. Devices- Restart 2 devices 3. Restore. Display the topology information in " 4. Displays the connection status between AP and CPEs, including Signal strength, background noise, transmit and receive rate. 5. Configure the Wi-Fi settings, including operating mode, SSID, Password, channel, channel bandwidth, transmit power 6. Bridge alignment 7. Spectrum Scan 8. PoE Output Management
Certifications	
EMC	CE-EMC (EN 55032: 2015+A11: 2020, EN IEC 61000-3-2: 2019, EN 61000-3-3: 2013+A1: 2019, EN 50130-4: 2011+A1: 2014, EN 55035: 2017+A11: 2020), IC (ICES-003: Edition 7:2020), RCM (AS/NZS CISPR 32: 2015)
Security	CB (AMD1:2009, AMD2:2013, IEC 62368-1: 2014 (2nd edition)), CE-LVD (EN 62368-1: 2014+A11: 2017)
Environment	CE-RoHS (2011/65/EU), WEEE (2012/19/EU), Reach (Regulation (EC) No. 1907/2006)
Broadcasting	EN 301 893, EN 300 440, EN 62311, EN 301 489-3, EN 301 489-17

Typical application

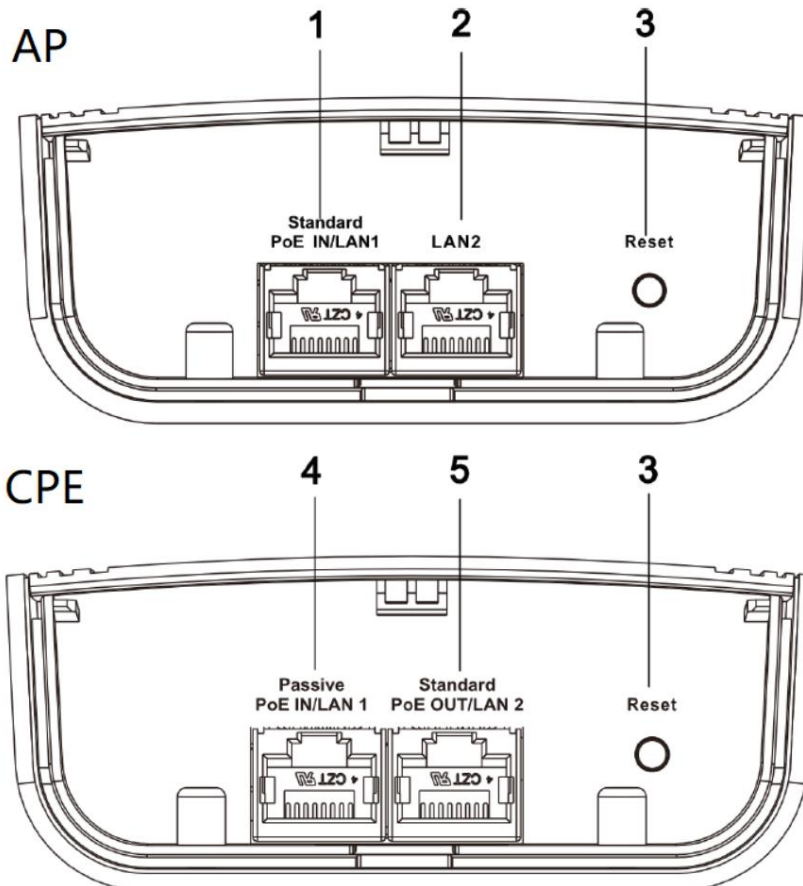
Scene 1



Scene 2



Connections



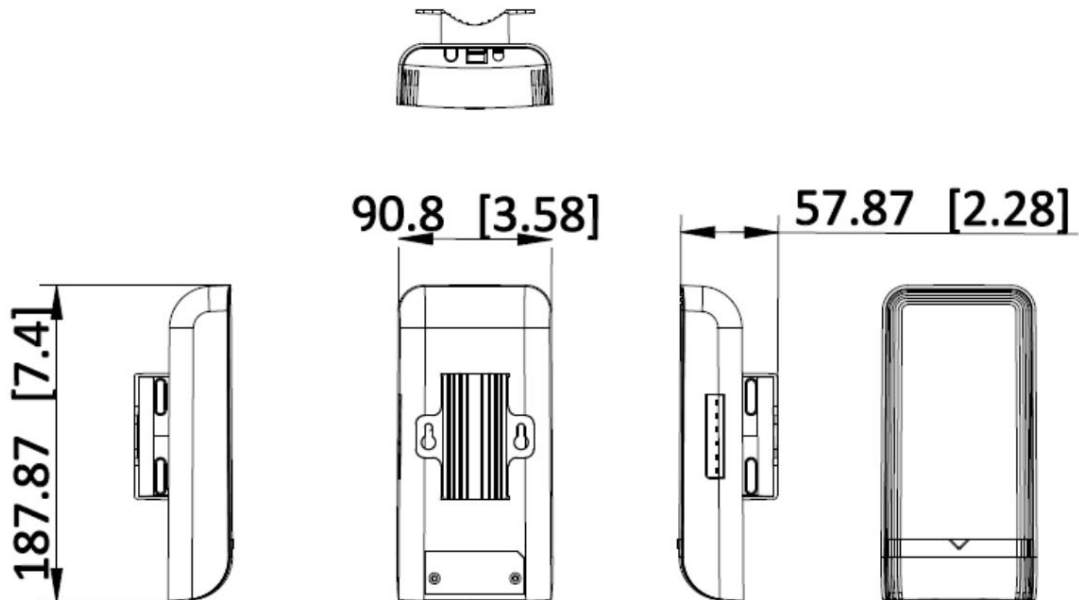
No.	Interface/Button	Description
1	Standard PoE IN/LAN 1	The adaptive RJ45 port with 10/100

		Mbit/s can also be referred to as Standard PoE input port used become.
2	LAN 2	The adaptive RJ45 port with 10/100 Mbit/s.
3	Reset	Press and hold for 4 seconds to... Factory settings to restore.
4	Passive PoE IN/LAN 1	The adaptive RJ45 port with 10/100 Mbit/s can also be used as a passive PoE input port.
5	Standard PoE OUT/LAN 2	The adaptive RJ45 port with 10/100 Mbit/s can also be referred to as Standard PoE output port be used.

Available models

- DS-3WF0EC-5ACT(B)
- DS-3WF0EC-5ACT(B)-AP
- DS-3WF0EC-5ACT(B)-ST
- F-WL-B50E-TAC(iFLOW)
- F-WL-B50E-TAC-AP(iFLOW)
- F-WL-B50E-TAC-ST(iFLOW)

Dimensions



See Far, Go Further



www.hikvision.com
support@hikvision.com

