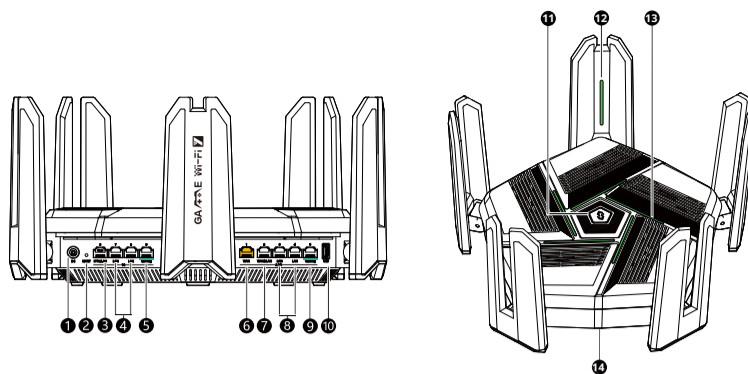


RG-EW7200BE PRO Quick Start Guide



- ❶ Power connector
- ❷ 1GE LAN port
- ❸ 2.5GE LAN/WAN port
- ❹ USB 3.0 port
- ❺ System LED/Reeye Mesh LED
- ❻ Reset button
- ❼ 1GE LAN port (Game)
- ❽ 2.5GE LAN port
- ❾ Game Turbo LED
- ❿ Nameplate
- ⓫ 1GE LAN/IPTV port (LAN port by default, can be switched to an IPTV port)
- ⓬ 2.5GE WAN port
- ⓭ 2.5GE LAN port (Game)
- ⓮ Reeye Mesh button

Status	Description
Green	Solid on The router is connected to the Internet. The mesh Wi-Fi signal is strong (as a secondary router).
	Fast blinking (8 times per second) The router is starting up/resetting/upgrading. Mesh pairing is in progress.
Orange	Solid on The router is connected to the Internet, but the mesh Wi-Fi signal is weak.
Red	Solid on The router is not connected to the Internet.

Status	Description
Off	The router is starting up/resetting/upgrading.
Green, blue, cyan, and yellow breathing	Game turbo is off.
Purple breathing	Game turbo is on.

Nameplate	Description
Nameplate	The nameplate contains product name, model, power parameters, and default IP address.

Package Contents

Check the contents after removing the packaging materials.
Router x 1; Power adapter x 1; Quick Start Guide x 1; Warranty Card x 1; Ethernet cable x 1

Managing the Router

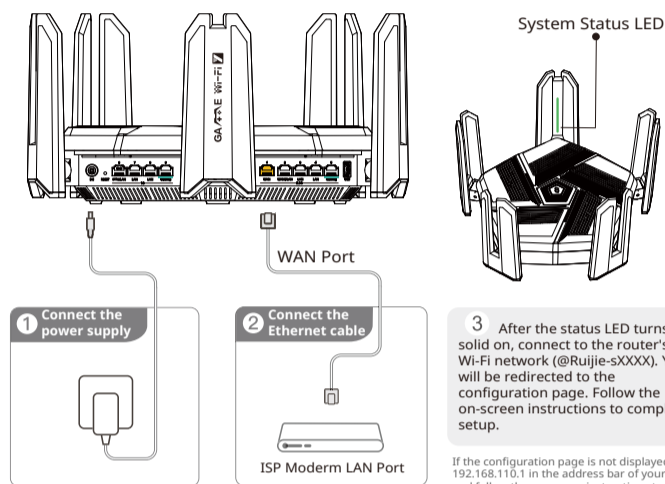
Method 1: Manage the router with Ruijie Reeye App. Scan the QR code to download Ruijie Reeye App on your mobile device. With Ruijie Reeye App, you can access the router to view or change its settings.



Download Ruijie Reeye App

Method 2: Manage the router using the web interface. Connect to the router's Wi-Fi network. Open a web browser, and enter 192.168.110.1 in the address bar. You can log in to the router's web interface to set up and manage the router.

Installing a Single Router



If the configuration page is not displayed, enter 192.168.110.1 in the address bar of your browser, and follow the on-screen instructions to complete setup.

RG-EW7200BE PRO

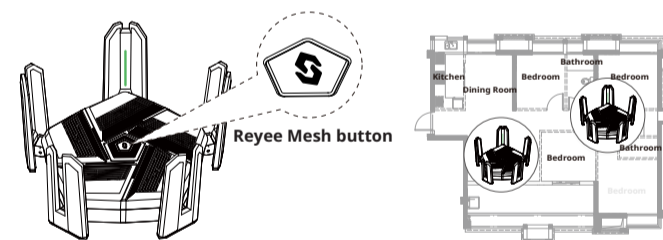
BE7200 Dual-Band Wi-Fi 7 Wireless Router Quick Start Guide

Please read this document carefully before installing and using your device. Keep it for future reference.



Connecting Multiple Routers Through Reeye Mesh

1. Connect the first router to the Internet and configure it as the primary router.



2. Place the secondary router within 2 meters (6.56 in.) of the primary router, and power it on.

Wait for a few minutes until the status LED on the secondary router turns from blinking green to solid red.
• Ensure that the secondary router is in its factory settings. If the router has been configured before, press the Reset button for 10 seconds to restore the router to factory defaults before performing step 3.

3. Press the Reeye Mesh button on the primary router. Mesh pairing will take about 2 minutes.

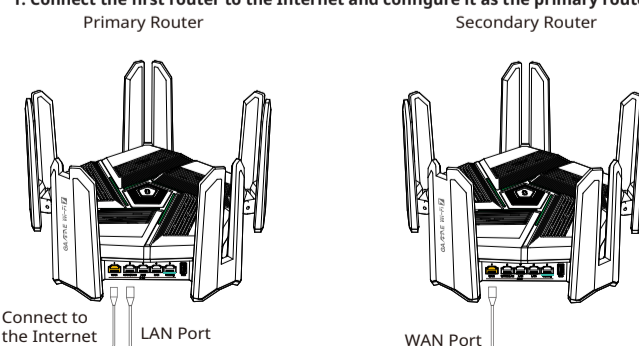
During mesh pairing, the Reeye Mesh LEDs on both routers will blink for about 2 minutes. When both Reeye Mesh LEDs stop blinking and turn solid on, mesh pairing is complete, and the secondary router automatically find and synchronize to the primary router's Wi-Fi signal.

4. Place the secondary router where you want Wi-Fi service, and power it on.

The secondary router does not need to be set up. After the status LED turns solid green, you can connect to the router's Wi-Fi signal.
• If the status LED is solid orange or red, place the two routers near each other to avoid too many walls or obstacles between them.
• If you have three or more routers, repeat steps 2 to 4 to connect them one by one. Up to six routers are supported for mesh networking, including one primary router and five secondary routers.

Connecting Multiple Routers with Ethernet Cables

1. Connect the first router to the Internet and configure it as the primary router.



2. Connect the WAN port (yellow) of the secondary router to the LAN port of the primary router with an Ethernet cable. Power on both routers, and wait for a few minutes until the status LED turns solid green. Press the Reeye Mesh button on the primary router to complete wired mesh pairing. After the mesh pairing is successful, the secondary router automatically find and synchronize to the primary router's Wi-Fi signal.

• Ensure that the secondary router uses factory settings. If the router has been configured before, press the Reset button for 10 seconds to restore the router to factory defaults before performing step 2.

FAQs

What do I do if I cannot log in to the router's web interface (192.168.110.1)?

- (1) Ensure that the PC's NIC is set to Obtain an IP address automatically.
 - (2) Ensure that the PC is connected to one of LAN1/2/3 ports on the router, and that the port status LED is on. If the port status LED is not on, replace the Ethernet cable.
 - (3) Close and re-open your browser (Google Chrome is recommended), and enter 192.168.110.1 in the address bar to try again.
 - (4) Use another Web browser.
 - (5) Use another Ethernet cable or PC.
- If the fault persists, restore the router to factory defaults by pressing the Reset button for 10 seconds.

What can I do if I cannot access the Internet?

- (1) Ensure that the Ethernet cable is properly connected as indicated in Installing a Single Router, and that the port status LED is on.
- (2) Choose Internet on the router's web interface to check the Internet connection type.
- (3) If your ISP provides a broadband account and password, select PPPoE and enter the account and password. If your ISP provides IP address, subnet mask, gateway, and DNS server, then select Static IP and enter mandatory parameters.
- (3) If the fault persists, contact your ISP.

What can I do if I forget the admin password?

Try to enter the Wi-Fi password. If the password is still incorrect, restore the router to factory defaults.

How do I restore the router to factory defaults?

Use a pin to press and hold the Reset button for 10 seconds until the status LED starts blinking, then release the button. After the status LED turns solid on, the router is restored to factory defaults successfully, and you can connect to the router's Wi-Fi network (@Ruijie-sXXXX).

Power Consumption

The router complies with the European Commission (EC) Regulation No. 1275/2008 and Regulation No. 801/2013.

1. Enable or disable Wi-Fi: Log in to the router's web interface, and choose **More > Wi-Fi-Switch** to enable or disable Wi-Fi.
2. Power consumption in networked standby mode: < 8 W.
3. The product enters the networked standby mode immediately after data transmission stops.
4. You are advised to unplug the power cord if the router is not used for a long time.
5. For details about the router, visit <https://reeye.ruijie.com/en-global/products/home-wifi/> to view the related documents.

Use only power supplies listed in the user instruction.
Power supply manufacturer: Chenzhou Frecom Electronics Co., Ltd.
Model: F36L7-120300SPACP Input: 100-240V~, 50/60Hz, 0.9A Output: 12.0V 3.0A



Scan the QR code for more languages

- English
- 繁體中文
- العربية
- български език
- Bahasa Indonesia
- Español (América Latina)
- Русский
- Türkçe
- Việt Nam
- Deutsch
- Polski

